



PUTTERILLS

est. 1992



Elder Avenue, Stotfold, SG5 4ST
Offers Over: £425,000
Freehold

PROPERTY SUMMARY

This beautifully presented three-bedroom detached home on Elder Avenue, Stotfold, offers modern family living in a peaceful, sought-after location for a fixed price of £435,000. The ground floor features a welcoming entrance, downstairs WC, and a standout spacious kitchen/diner with integrated appliances and ample room for entertaining. A bright and airy living room opens directly onto the private rear garden, providing an excellent indoor-outdoor flow. Upstairs, there are three well-proportioned bedrooms, including a master bedroom with en-suite, plus a stylish family bathroom. The low-maintenance rear garden offers a secure and relaxing outdoor space, while the front provides off-street parking for two cars. Located within walking distance of Stotfold High Street and close to the A1 and Arlesey Station, the property is ideal for commuters seeking convenience without sacrificing tranquility. Overall, this is a high-quality, move-in-ready family home in a prime residential area—early viewing is strongly recommended.

3



2



1

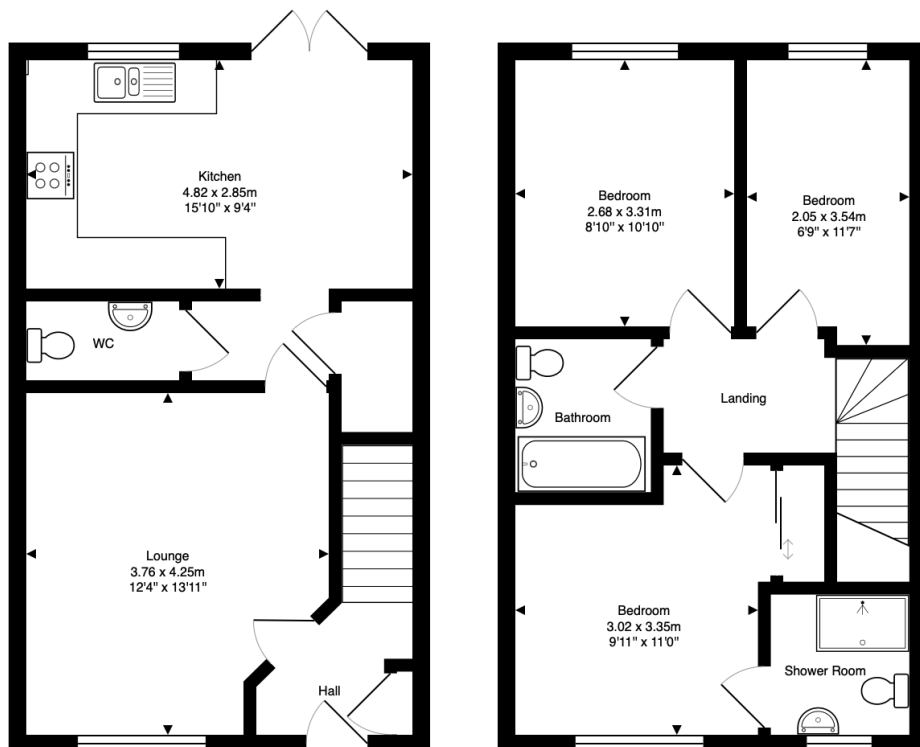












Elder Avenue, Stotfold, SG5 4ST

Approximate Total Area: 81.4 m² ... 876 ft²

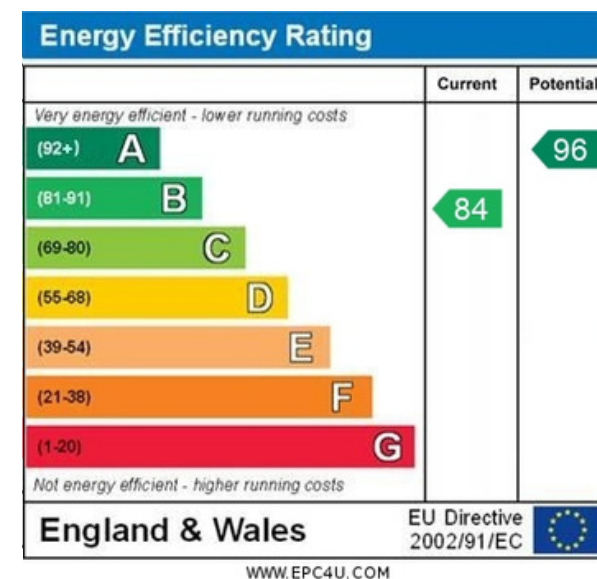
This plan is for illustrative purposes only. Measurements and positions of doors, windows, and fixtures are approximate and should not be relied upon.

LOCAL AUTHORITY
North Herts

TENURE
Freehold

COUNCIL TAX BAND
D

VIEWINGS
By prior appointment only



Agents Note: Whilst every care has been taken to prepare these particulars, they are for guidance purposes only. All measurements are approximate and are for general guidance purposes only and whilst every care has been taken to ensure their accuracy, they should not be relied upon and potential buyers/tenants are advised to recheck the measurements



OFFICE ADDRESS

Putterills Hitchin
60 Hermitage Road
Hitchin
SG5 1DB

CONTACT DETAILS

01462 632222
hitchin@putterills.co.uk
www.putterills.co.uk