



P U T T E R I L L S

— est. 1992 —

Beauchamps, Welwyn Garden City, AL7 1FH
Guide Price £700,000

PROPERTY SUMMARY

Beauchamps is a beautifully modernised, chain-free four-bedroom link-detached family home, tucked away in a peaceful cul-de-sac in a highly desirable area of Welwyn Garden City.

4



The property offers two well-proportioned reception rooms, four generous bedrooms and two stylish modern bathrooms. Additional benefits include a private rear garden, a converted garage and carport providing flexible extra space, and off-street parking.

2



2



Ideally positioned close to excellent schools, town-centre amenities, green spaces and the mainline train station, making it an ideal family home in a prime location.













LOCAL AUTHORITY
Welwyn Hatfield

TENURE Freehold

COUNCIL TAX BAND
F

VIEWINGS

By prior appointment only

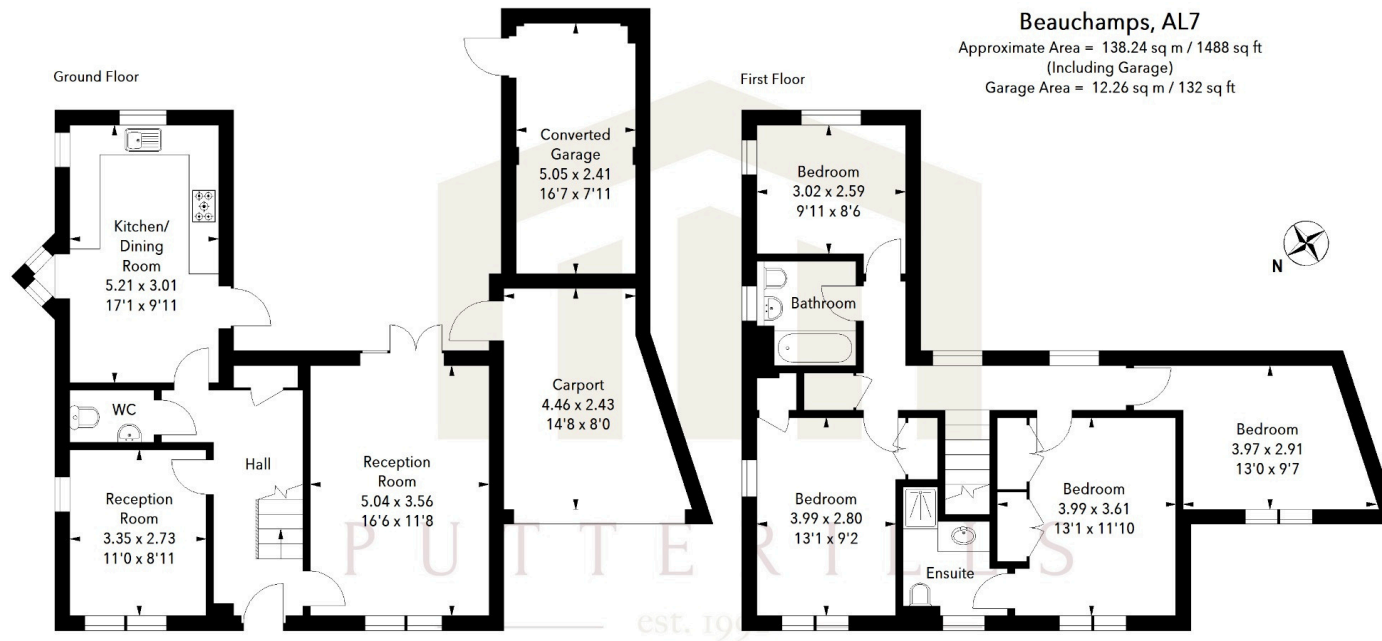


Illustration For Identification Purposes Only.
All measurements and areas are approximate, not to scale.
© Orange Tree Photography

Score	Energy rating	Current	Potential
92+	A		
81-91	B		85 B
69-80	C	73 C	
55-68	D		
39-54	E		
21-38	F		
1-20	G		

Agents Note: Whilst every care has been taken to prepare these particulars, they are for guidance purposes only. All measurements are approximate and are for general guidance purposes only and whilst every care has been taken to ensure their accuracy, they should not be relied upon and potential buyers/tenants are advised to recheck the measurements



OFFICE ADDRESS
34 Wigmores North
Welwyn Garden
City
Hertfordshire
AL8 6PH

CONTACT DETAILS
01707 393333
wgc@putterills.co.uk
www.putterills.co.uk