



PUTTERILLS

est. 1992



Marsden Road, Welwyn Garden City, AL8 6YH
Guide Price £625,000

MARSDEN ROAD

PROPERTY SUMMARY

Situated on the highly regarded Marsden Road, this extended three-bedroom terraced home offers an ideal balance of contemporary comfort and everyday practicality. Set at a guide price of £625,000, it has been thoughtfully updated and is presented in excellent condition throughout.

The highlight of the home is the spacious rear extension, creating a bright and airy open-plan kitchen/living space. Upstairs are three well-proportioned bedrooms, each offering a calm and comfortable retreat, complemented by a stylish family bathroom.

Located on the desirable West Side, the home is within easy reach of local shops, popular schooling options and the town centre's wide range of amenities.

3



1



2







PUTTERILLS
— est. 1992 —









LOCAL AUTHORITY
Welwyn Hatfield

TENURE Freehold

COUNCIL TAX BAND
D

VIEWINGS

By prior appointment only

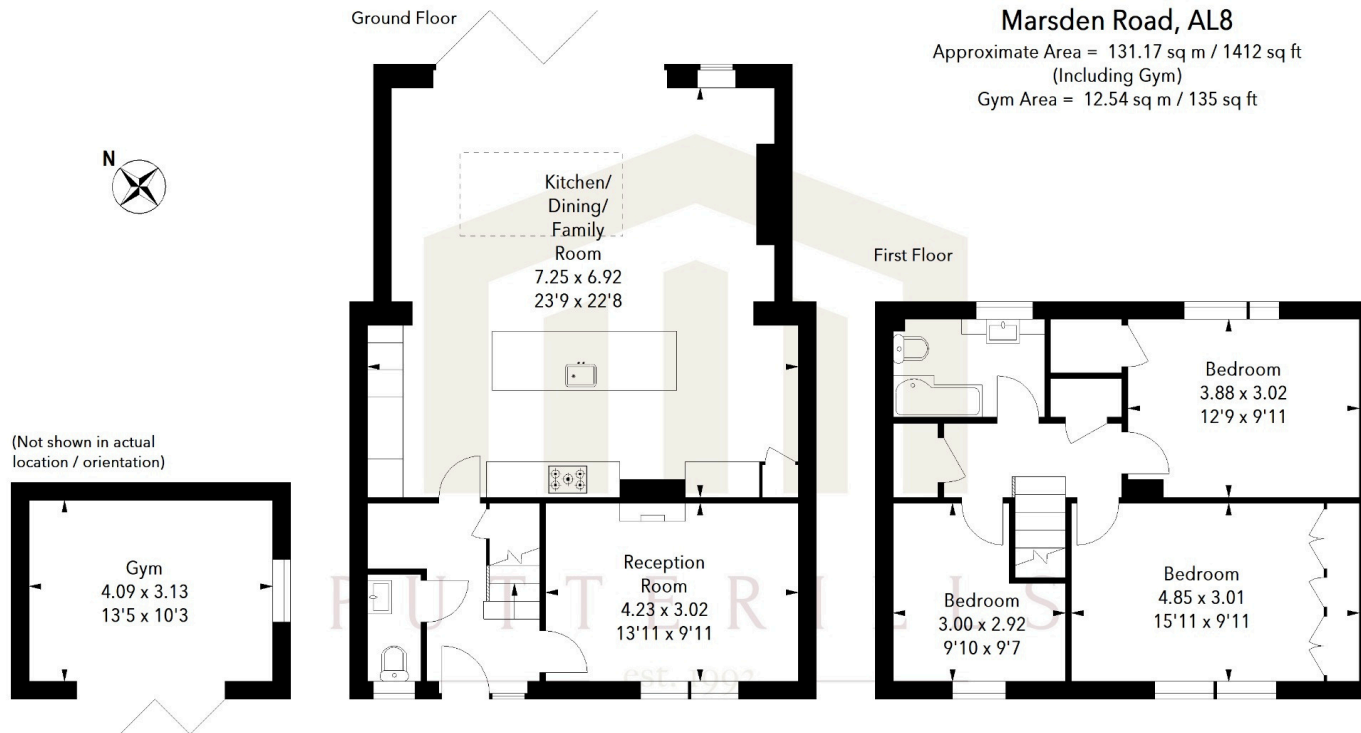


Illustration For Identification Purposes Only.
All measurements and areas are approximate, not to scale.
© Orange Tree Photography

Score	Energy rating	Current	Potential
92+	A		
81-91	B		87 B
69-80	C	74 C	
55-68	D		
39-54	E		
21-38	F		
1-20	G		

Agents Note: Whilst every care has been taken to prepare these particulars, they are for guidance purposes only. All measurements are approximate and are for general guidance purposes only and whilst every care has been taken to ensure their accuracy, they should not be relied upon and potential buyers/tenants are advised to recheck the measurements



OFFICE ADDRESS
34 Wigmores North
Welwyn Garden
City
Hertfordshire
AL8 6PH

CONTACT DETAILS
[01707 393333](tel:01707393333)
wgc@putterills.co.uk
www.putterills.co.uk