



PUTTERILLS

est. 1992

**Wyth End, Langley, SG4 7PL**  
**Guide Price: £750,000**  
**Freehold**

# PROPERTY SUMMARY

Located in the tranquil village of Langley, this charming four-bedroom detached home offers a rare blend of peaceful countryside living and convenient access to nearby amenities and transport links. Featuring a generous driveway, a stylish open-plan kitchen/dining area, a bright and versatile reception room, and four well-proportioned bedrooms—including a principal bedroom with en-suite—this property is designed for comfortable modern family life. Stunning countryside views, a beautifully mature garden, and the potential to extend (subject to consent) further enhance its appeal. With excellent connectivity to Stevenage, Hitchin, and Codicote, this home provides the perfect balance of rural serenity and everyday convenience.

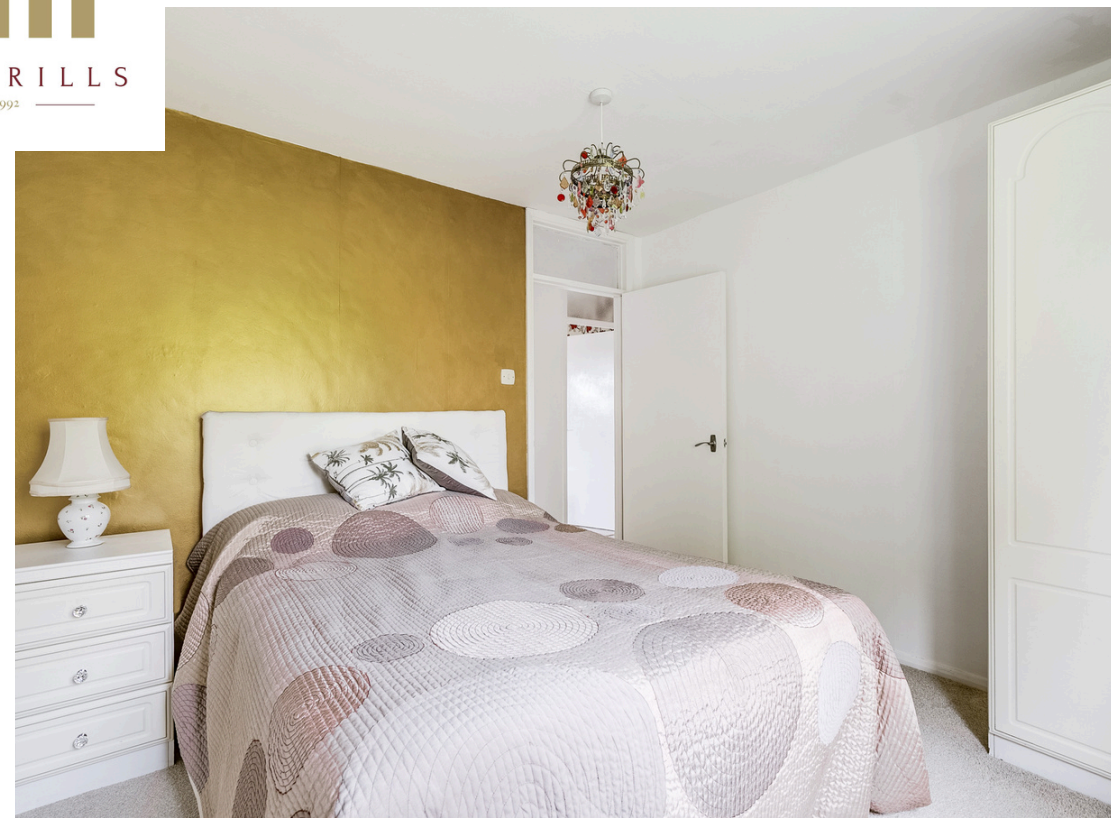
- 4 
- 2 
- 2 



















## Wytch End, SG4

Approximate Area = 164.62 sq m / 1772 sq ft  
 (Including Garage & Excluding Shed)  
 Garage Area = 27.03 sq m / 291 sq ft  
 Shed Area = 10.68 sq m / 115 sq ft



Ground Floor

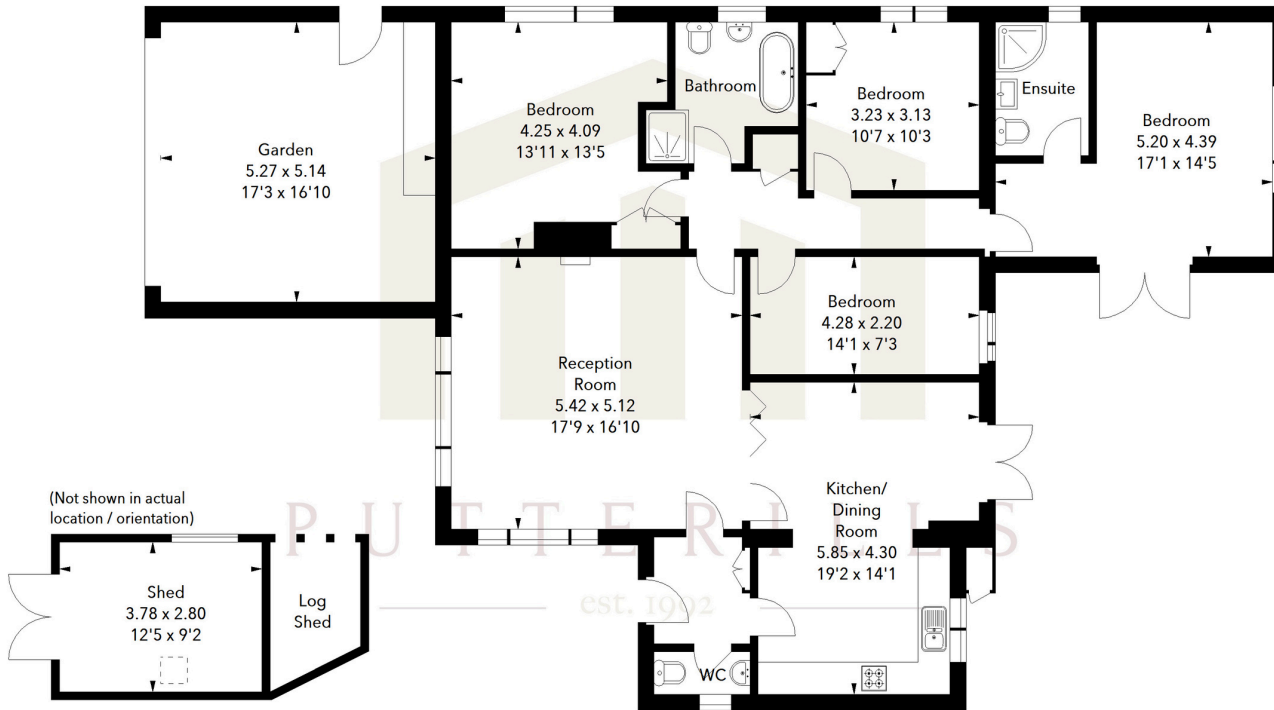


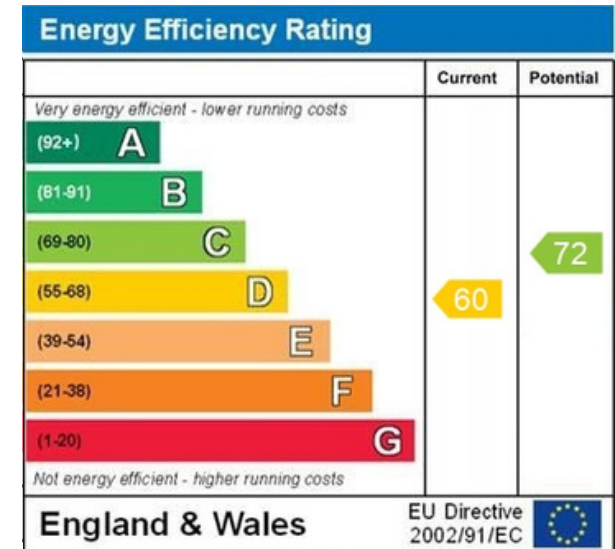
Illustration For Identification Purposes Only.  
 All measurements and areas are approximate, not to scale.  
 © Orange Tree Photography

LOCAL AUTHORITY  
 North Herts

TENURE  
 Freehold

COUNCIL TAX BAND  
 F

VIEWINGS  
 By prior appointment only



WWW.EPC4U.COM

Agents Note: Whilst every care has been taken to prepare these particulars, they are for guidance purposes only. All measurements are approximate and are for general guidance purposes only and whilst every care has been taken to ensure their accuracy, they should not be relied upon and potential buyers/tenants are advised to recheck the measurements



### OFFICE ADDRESS

Putterills Hitchin  
 60 Hermitage Road  
 Hitchin  
 SG5 1DB

### CONTACT DETAILS

01462 632222  
 hitchin@putterills.co.uk  
 www.putterills.co.uk