



P U T T E R I L L S
— est. 1992 —

Guide Price £1,600,000
Parkway, Welwyn Garden City, AL8 6HQ

PROPERTY SUMMARY

We are pleased to present this rare and exceptionally well-maintained five-bedroom family home, occupying a prime position on the highly sought-after Parkway in Welwyn Garden City.

Offering substantial and versatile accommodation throughout, the property features five generous bedrooms, three bathrooms and three elegant reception rooms, providing ample space for both family life and entertaining.

Meticulously cared for by the current owners, the home combines character, comfort and practicality, with well-balanced living spaces and an abundance of natural light throughout.

Outside, a beautifully maintained private garden provides a peaceful setting for relaxation and outdoor dining, while a garage and off-street parking to the rear offer valuable convenience.

Situated within easy reach of the town centre, mainline station, highly regarded schooling and a range of local amenities, this distinguished residence presents a rare opportunity to acquire a substantial family home in one of Welwyn Garden City's most prestigious and sought-after locations.































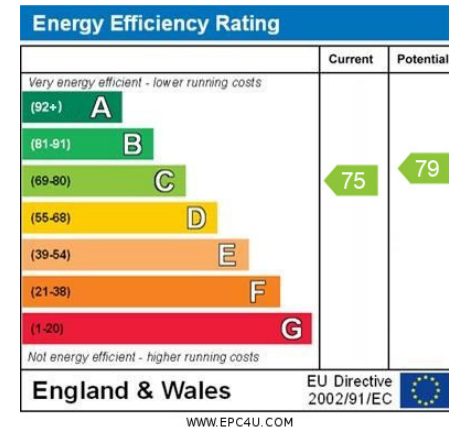
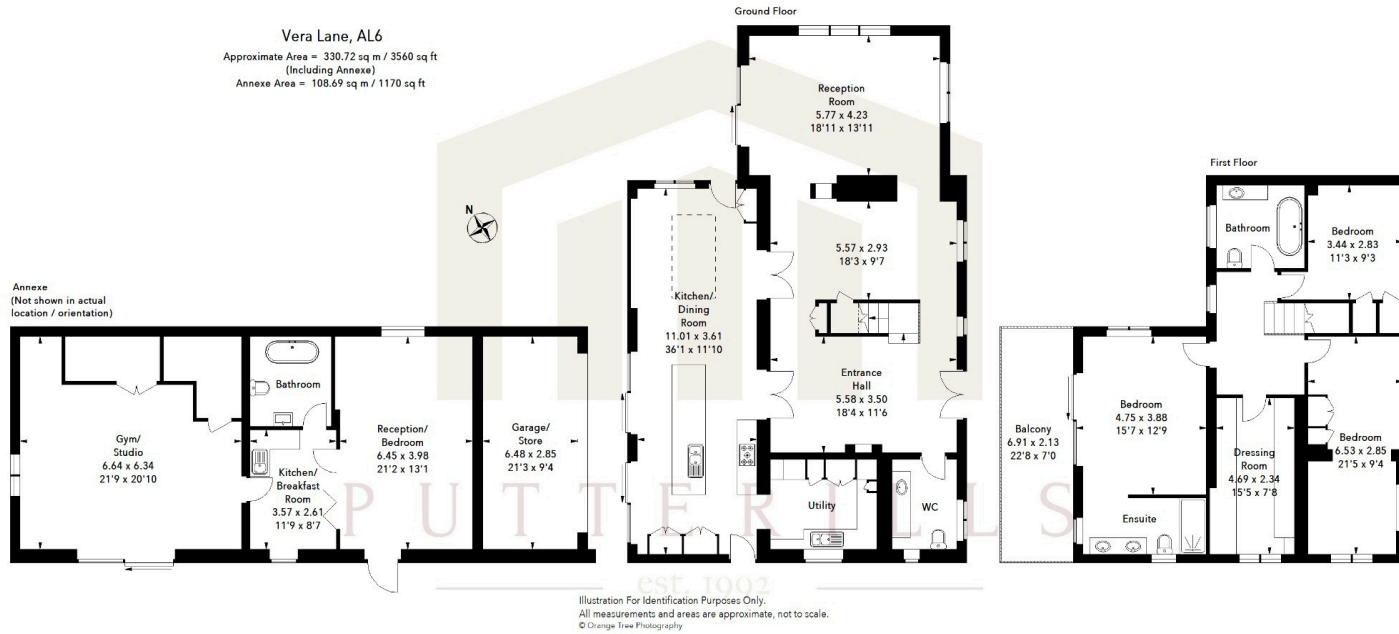


LOCAL AUTHORITY
Welwyn Hatfield

TENURE
Freehold

COUNCIL TAX BAND G

VIEWINGS
By prior appointment only



Agents Note: Whilst every care has been taken to prepare these particulars, they are for guidance purposes only. All measurements are approximate and are for general guidance purposes only and whilst every care has been taken to ensure their accuracy, they should not be relied upon and potential buyers/tenants are advised to recheck the measurements



OFFICE ADDRESS
Putterills Welwyn
Garden City
34 Wigmores North,
Hertfordshire, AL8
6PH

CONTACT DETAILS

01707 393333
wgc@putterills.co.uk
www.putterills.co.uk