



Rosedale, Welwyn Garden City, AL7 1DW  
Guide Price £500,000



# PROPERTY SUMMARY

Nestled within a peaceful cul-de-sac in the highly sought-after Welwyn Garden City, this charming three-bedroom terraced house presents an exceptional opportunity for families and professionals alike. Offered for sale with a guide price of £500,000, this property combines comfortable living spaces with practical features, all within easy reach of local amenities.

This well-presented home offers a warm and versatile ground floor with two spacious reception rooms, a modern downstairs shower room, and a kitchen that opens to a private garden—ideal for family life and entertaining. Upstairs features three bright and generously sized bedrooms and a family bathroom. Outside, the rear garden provides a peaceful retreat, complemented by off-road parking. Situated in a quiet cul-de-sac, the property is conveniently close to shops, schools, and local amenities.

3



2



2















PUTTERILLS  
— est. 1992 —

















LOCAL AUTHORITY  
Welwyn Hatfield

TENURE Freehold

COUNCIL TAX BAND  
D

VIEWINGS

By prior appointment only

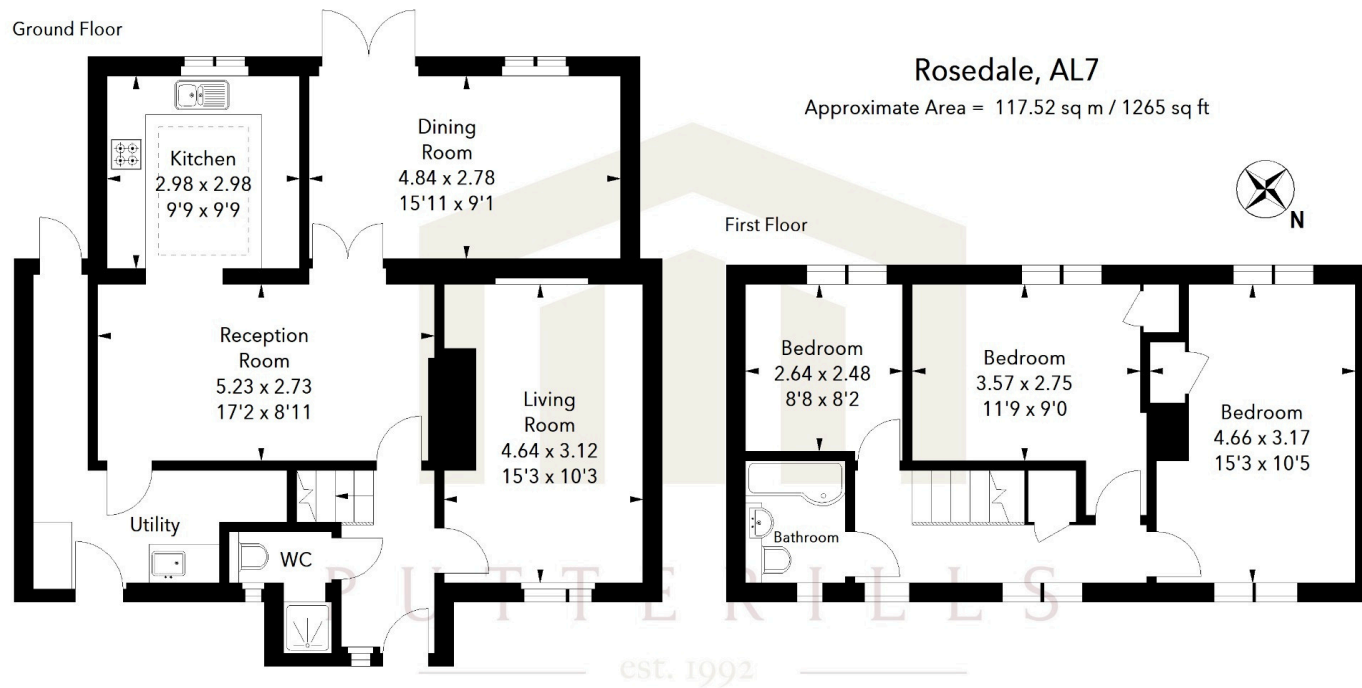


Illustration For Identification Purposes Only.  
All measurements and areas are approximate, not to scale.  
© Orange Tree Photography

Score	Energy rating	Current	Potential
92+	A		
81-91	B		84 B
69-80	C	74 C	
55-68	D		
39-54	E		
21-38	F		
1-20	G		

Agents Note: Whilst every care has been taken to prepare these particulars, they are for guidance purposes only. All measurements are approximate and are for general guidance purposes only and whilst every care has been taken to ensure their accuracy, they should not be relied upon and potential buyers/tenants are advised to recheck the measurements

OFFICE ADDRESS

34 Wigmores North  
Welwyn Garden  
City  
Hertfordshire  
AL8 6PH

CONTACT DETAILS

01707 393333  
lwgc@putterills.co.uk  
www.putterills.co.uk

