



Kingswood Avenue, Hitchin, SG4 0PB
Guide Price: £650,000
Freehold

PROPERTY SUMMARY

This four-bedroom family home on Kingswood Avenue, Hertfordshire, is offered at a guide price of £650,000. It features ample parking, an integral garage, and a welcoming interior ready for immediate occupation with scope for personalisation.

The ground floor offers a spacious reception room and a separate utility room, while upstairs provides four bright bedrooms and a modern family bathroom. The property enjoys open front views and a private rear garden ideal for relaxation or entertaining.

Located just a mile from Hitchin Train Station, it offers excellent commuter links and access to local schools, shops, and amenities. With potential for future extensions (subject to planning), this well-presented home combines comfort, practicality, and long-term value in a highly desirable location.

4



1



2



















Kingswood Avenue, SG4

Approximate Area = 131.36 sq m / 1414 sq ft
(Including Garage)

Garage Area = 14.77 sq m / 159 sq ft

Ground Floor

First Floor

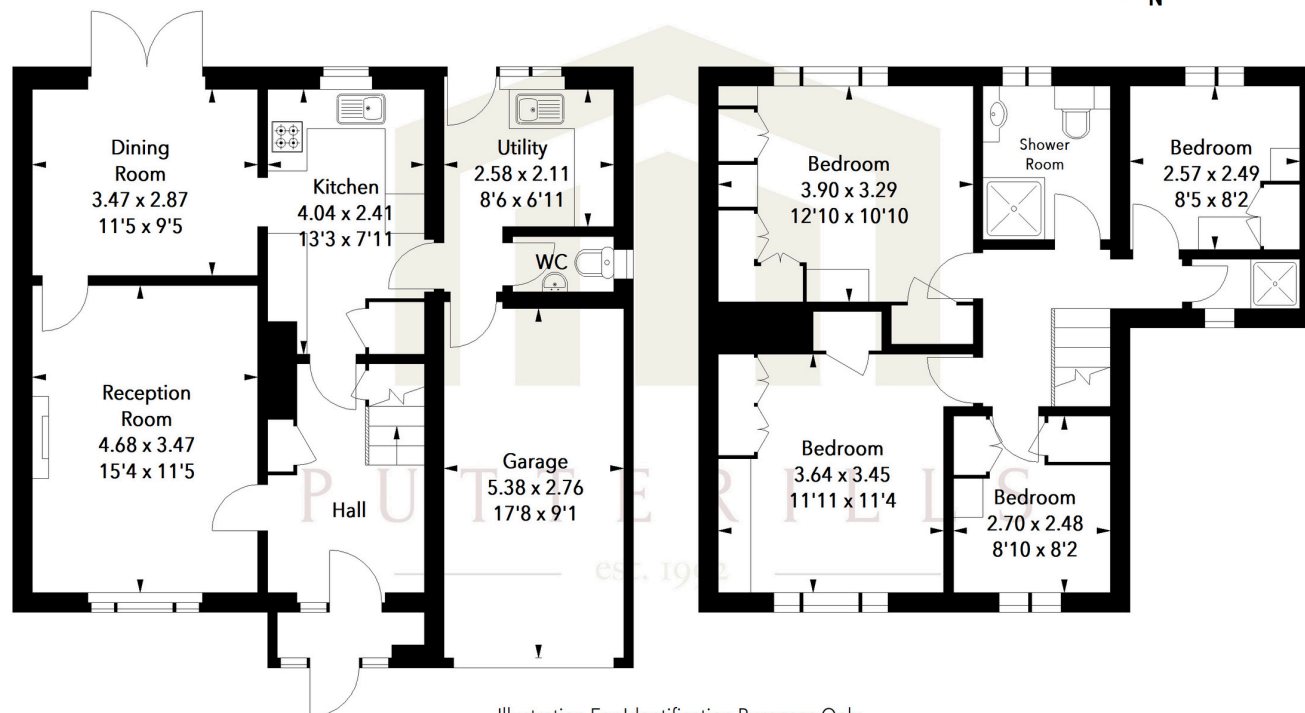


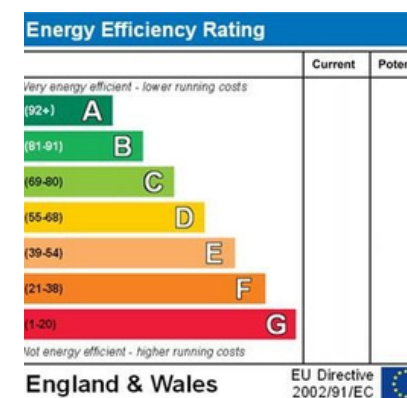
Illustration For Identification Purposes Only.
All measurements and areas are approximate, not to scale.
© Orange Tree Photography

LOCAL AUTHORITY
North Herts

TENURE
Freehold

COUNCIL TAX BAND
D

VIEWINGS
By prior appointment only



Agents Note: Whilst every care has been taken to prepare these particulars, they are for guidance purposes only. All measurements are approximate and are for general guidance purposes only and whilst every care has been taken to ensure their accuracy, they should not be relied upon and potential buyers/tenants are advised to recheck the measurements



OFFICE ADDRESS

Putterills Hitchin
60 Hermitage Road
Hitchin
SG5 1DB

CONTACT DETAILS

01462 632222
hitchin@putterills.co.uk
www.putterills.co.uk