



PUTTERILLS

est. 1992



New Road, Welwyn, Hertfordshire, AL6 0AH

Guide Price: £1,250,000

Stunning Detached Home in Digswell, Welwyn with Countryside Views



Property Summary

For many years, this has been a much-loved family home, a place where children have grown up, family life has unfolded, and the surrounding countryside has provided a constant backdrop to everyday moments. Now, as the current owners begin their next chapter and downsize locally, an exciting opportunity emerges for a new family to make this exceptional property their own.

Positioned within one of Digswell's most desirable residential locations, the home occupies a substantial plot with generous front and rear gardens and enjoys far-reaching views across the Hertfordshire countryside. Inside, the accommodation has been designed to adapt to family life, with three versatile reception rooms providing space to gather, work, relax and entertain, alongside four well-proportioned bedrooms and two bathrooms arranged across the upper floor.

While the property has been carefully maintained throughout its ownership, it also offers significant potential for future enhancement. The generous plot and existing footprint create exciting opportunities to extend, reconfigure or modernise, subject to the necessary planning permissions, allowing future owners to shape the home around their own vision.

A double garage, extensive driveway parking and excellent access to Welwyn North station add further practicality, while the combination of countryside surroundings, highly regarded schooling and strong commuter links continues to make this part of Digswell one of the area's most sought-after settings. Rarely do homes offering such a compelling blend of space, views, location and future potential come to the market.















Property Information



Services:

Mains Water, Mains Electricity, Mains Gas and Mains Drainage

Tenure:

Freehold

Local Authority:

Welwyn Hatfield

Council Tax:

Band G

EPC:

Band D

Directions:

AL6 0AH

Viewings:

All viewings strictly by appointment via the vendor's sole agents, Putterills.

Agents Note: Whilst every care has been taken to prepare these particulars, they are for guidance purposes only. All measurements are approximate and are for general guidance purposes only and whilst every care has been taken to ensure their accuracy, they should not be relied upon and potential buyers/tenants are advised to recheck the measurements.

New Road, AL6

Approximate Area = 242.00 sq m / 2605 sq ft
(Including Outbuilding)
Outbuilding Area = 31.96 sq m / 344 sq ft

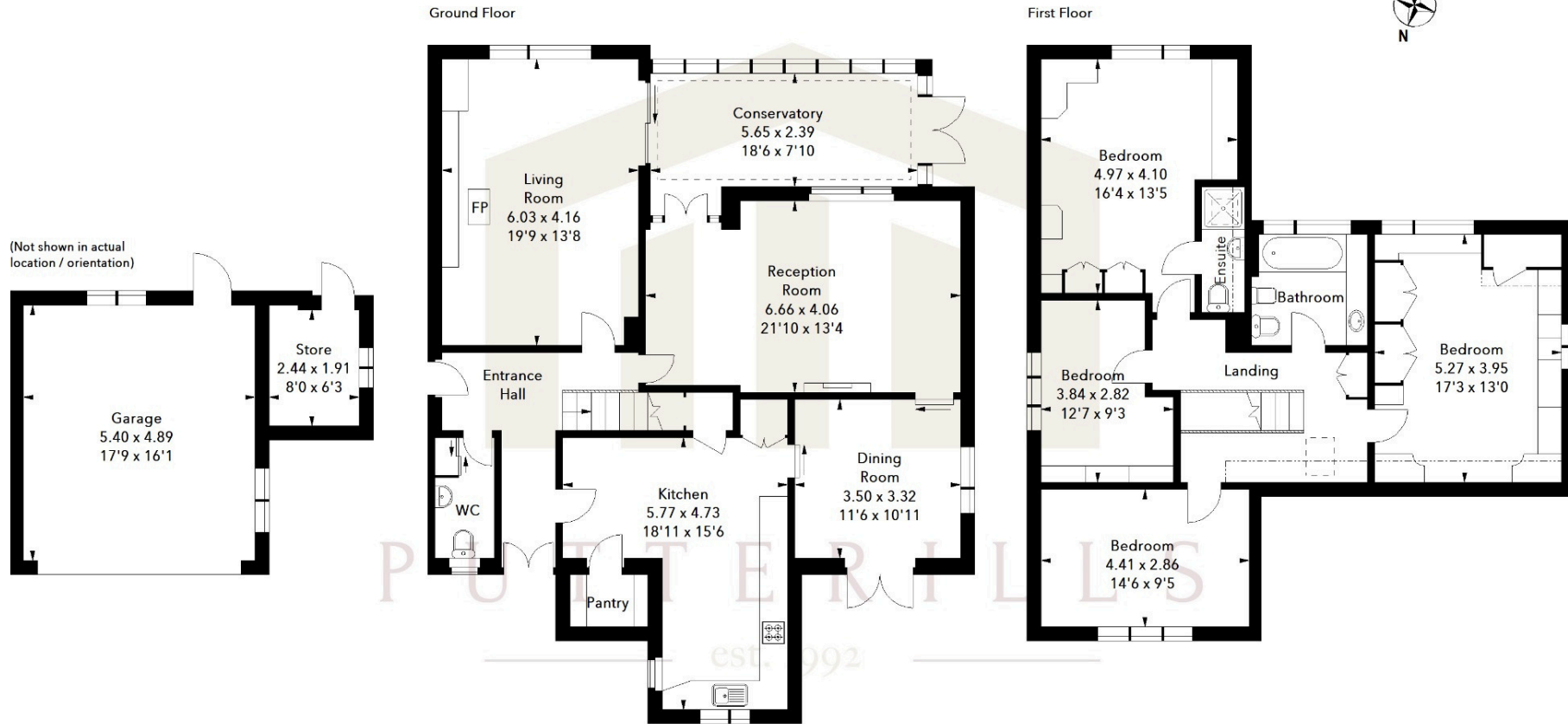


Illustration For Identification Purposes Only.
All measurements and areas are approximate, not to scale.
© Orange Tree Photography



putterills.co.uk | 01707 393333 | wgc@puterills.co.uk

34 Wigmores North, Welwyn Garden City, Hertfordshire AL8 6PH