



PUTTERILLS

est. 1992



Nursery Hill, St. Andrews Place, Hitchin, SG4 9GD
Offers Over: £350,000
Freehold

PROPERTY SUMMARY

A stylish two-bedroom, two-bathroom ground floor apartment set within a highly regarded modern development in the heart of Hitchin. The property features a bright and spacious open-plan living, dining and kitchen area, ideal for modern living and entertaining. The principal bedroom benefits from an en-suite, complemented by a well-proportioned second bedroom and a contemporary family bathroom. Further highlights include ample built-in storage and allocated parking. Ideally located within easy reach of Hitchin's shops, cafés, restaurants and excellent transport links, this well-presented apartment is perfectly suited to professionals, couples or downsizers seeking convenience without compromise.

2



2



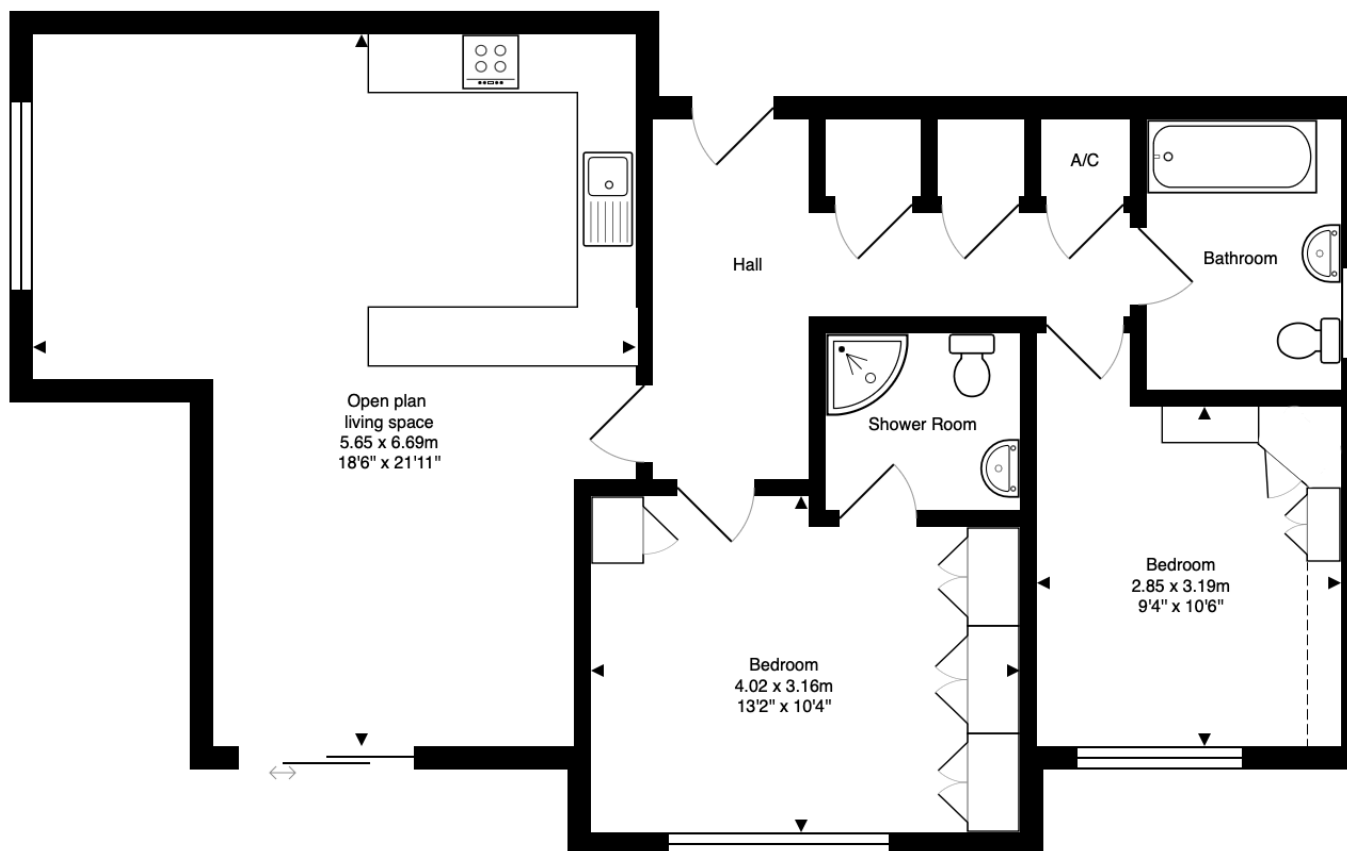
1









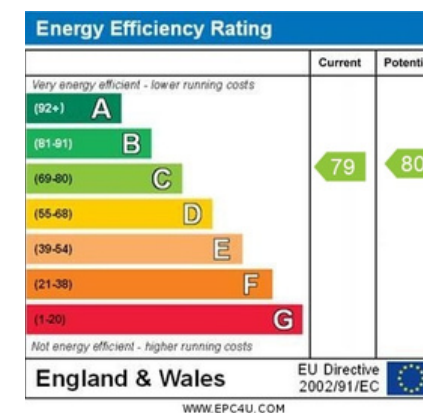


LOCAL AUTHORITY
North Herts

TENURE
Freehold

COUNCIL TAX BAND
C

VIEWINGS
By prior appointment only



Nursery Hill, St Andrews Place, Hitchin, SG4 9GD

Approximate Total Area: 74.2 m² ... 798 ft²

This plan is for illustrative purposes only. Measurements and positions of doors, windows, and fixtures are approximate and should not be relied upon.

Agents Note: Whilst every care has been taken to prepare these particulars, they are for guidance purposes only. All measurements are approximate and are for general guidance purposes only and whilst every care has been taken to ensure their accuracy, they should not be relied upon and potential buyers/tenants are advised to recheck the measurements



OFFICE ADDRESS

Putterills Hitchin
60 Hermitage Road
Hitchin
SG5 1DB

CONTACT DETAILS

01462 632222
hitchin@putterills.co.uk
www.putterills.co.uk