



PUTTERILLS


est. 1992



Claymore Drive, Ickleford, Hitchin, SG5 3UB
Guide Price: £1,200,000
Freehold

PROPERTY SUMMARY

This beautifully renovated five-bedroom detached home on Claymore Drive, Hitchin, offers a rare chain-free opportunity ideal for modern family living. Featuring a handcrafted oak kitchen, two spacious reception rooms, and five double bedrooms (including a principal suite with en-suite), the home combines character with contemporary functionality. The landscaped, low-maintenance garden backs onto the River Hiz, providing a peaceful outdoor space. Additional highlights include a large driveway, potential for extension (STPP), and a location within a sought-after village community and top school catchment. Early viewing is highly recommended.

- 5 
- 2 
- 2 

























Claymore Drive,
Ickleford, SG5

Approximate Area = 242.28 sq m / 2608 sq ft

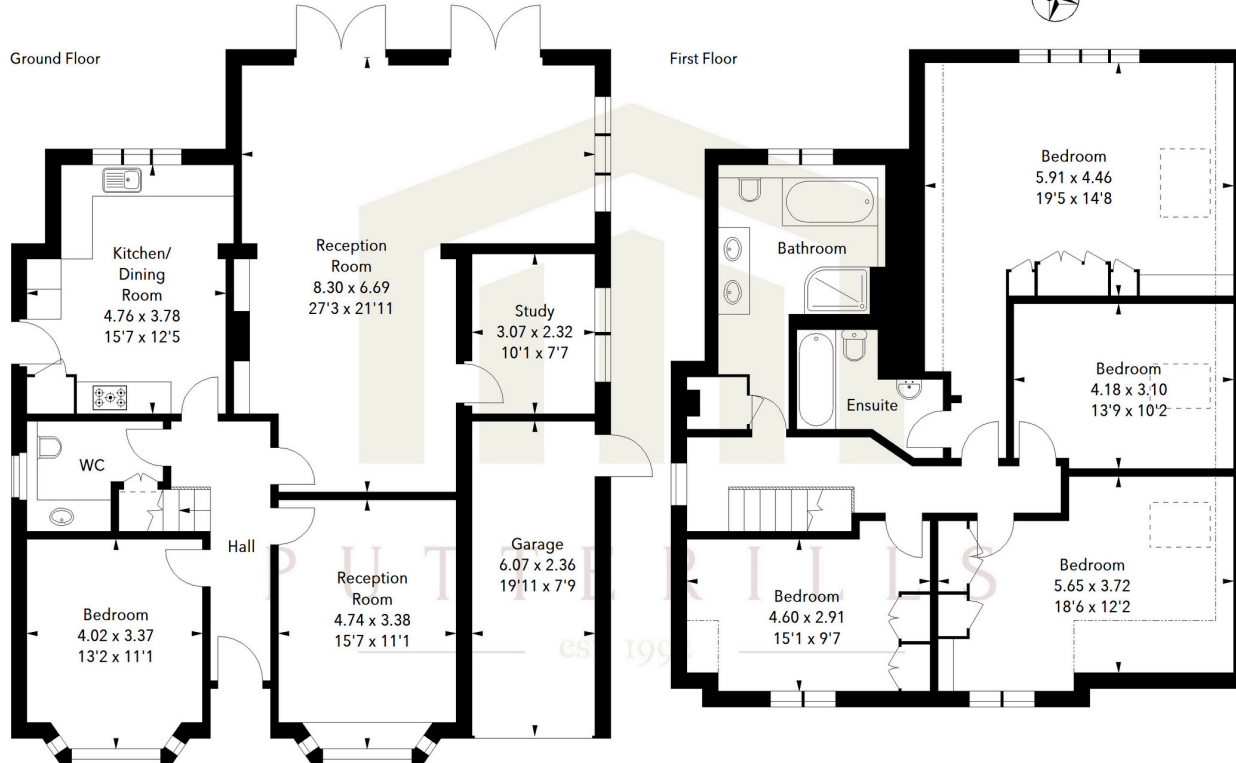


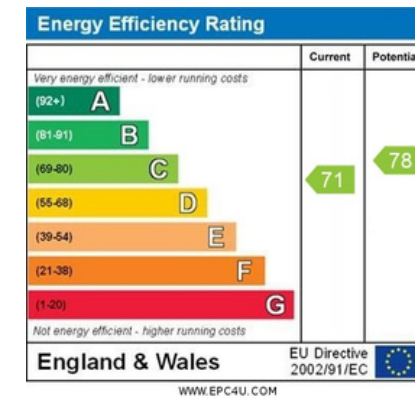
Illustration For Identification Purposes Only.
All measurements and areas are approximate, not to scale.
© Orange Tree Photography

LOCAL AUTHORITY
North Herts

TENURE
Freehold

COUNCIL TAX BAND
E

VIEWINGS
By prior appointment only



Agents Note: Whilst every care has been taken to prepare these particulars, they are for guidance purposes only. All measurements are approximate and are for general guidance purposes only and whilst every care has been taken to ensure their accuracy, they should not be relied upon and potential buyers/tenants are advised to recheck the measurements



OFFICE ADDRESS

Putterills Hitchin
60 Hermitage Road
Hitchin
SG5 1DB

CONTACT DETAILS

01462 632222
hitchin@putterills.co.uk
www.putterills.co.uk