



P U T T E R I L L S

— est. 1992 —

Ladygrove Mews, Preston, SG4 7SA

Guide Price: £600,000

Leasehold

PROPERTY SUMMARY

This charming Grade II listed barn conversion is located in the sought-after village of Preston. Originally a Lutyens-style farm building, it has been meticulously restored to blend traditional character with modern comforts. Set within a private gated development, the home features two spacious bedrooms (one with en-suite), an additional W/C, and a light-filled reception room. Residents enjoy access to beautifully maintained communal gardens.

The property offers a tranquil countryside lifestyle with easy access to Hitchin's market, shops, and transport links. Chain-free and rich in historical appeal, this rare offering presents a unique opportunity to own a piece of English heritage.

2



2



1



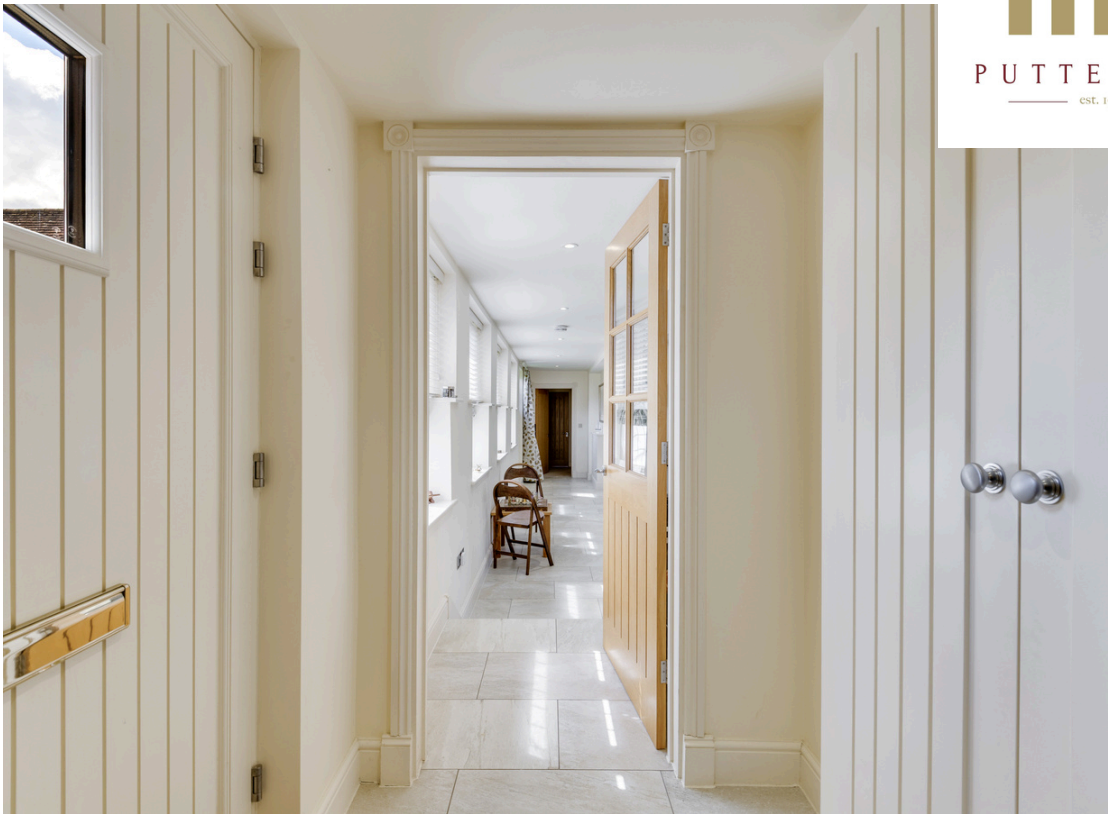








PUTTERILLS
— est. 1992 —









Ladygrove Mews, SG4 Approximate Area = 127.74 sq m / 1375 sq ft

Ground Floor

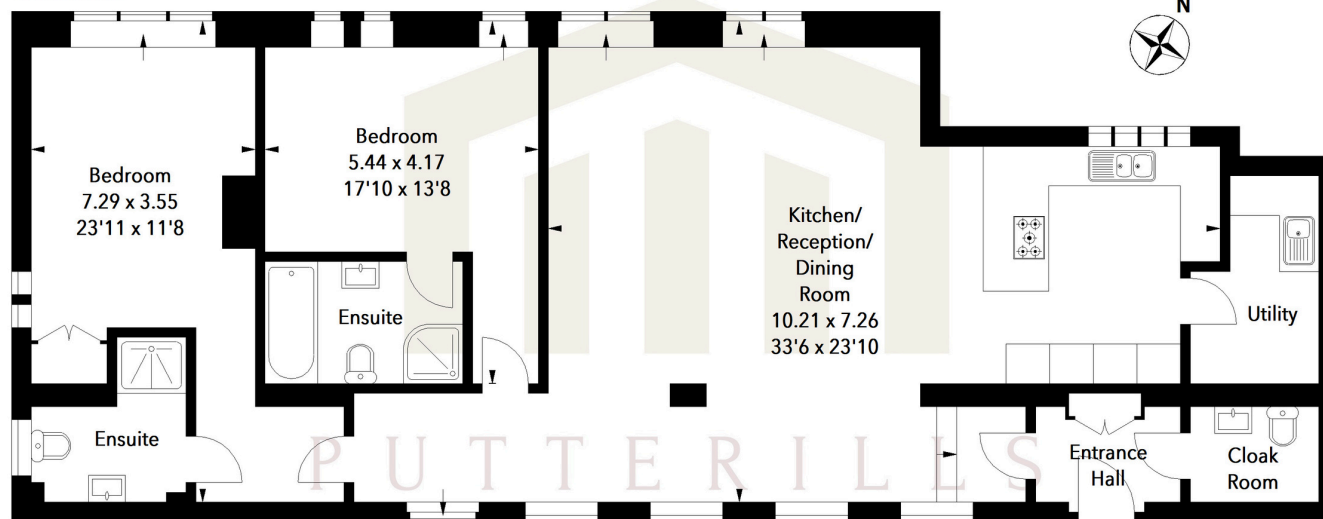


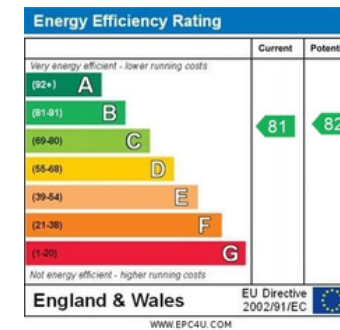
Illustration For Identification Purposes Only.
All measurements and areas are approximate, not to scale.
© Orange Tree Photography

LOCAL AUTHORITY
North Herts

TENURE
Leasehold

COUNCIL TAX BAND
D

VIEWINGS
By prior appointment only



Agents Note: Whilst every care has been taken to prepare these particulars, they are for guidance purposes only. All measurements are approximate and are for general guidance purposes only and whilst every care has been taken to ensure their accuracy, they should not be relied upon and potential buyers/tenants are advised to recheck the measurements



OFFICE ADDRESS

Putterills Hitchin
60 Hermitage Road
Hitchin
SG5 1DB

CONTACT DETAILS

01462 632222
hitchin@putterills.co.uk
www.putterills.co.uk