



Turnpike Lane, Ickleford, Hitchin, SG5 3XP
Offers Over £675,000
Freehold
EPC: D

PROPERTY SUMMARY

This beautifully presented family home is located in the desirable Turnpike Lane area of Hitchin. It features a spacious layout with four bedrooms, two bathrooms, a large generous reception area, and a modern open-plan kitchen/dining space. Additional highlights include a separate utility room, ample driveway parking, and potential for extension.

The home is set in a peaceful village setting with easy access to Hitchin Town and local amenities. It's also within the catchment area for excellent schools, making it ideal for families. Combining contemporary style with practicality and future growth potential, this property offers an exceptional living environment.

4



2



1





















LOCAL AUTHORITY
North Herts

TENURE
Freehold

COUNCIL TAX BAND
C

VIEWINGS
By prior appointment only

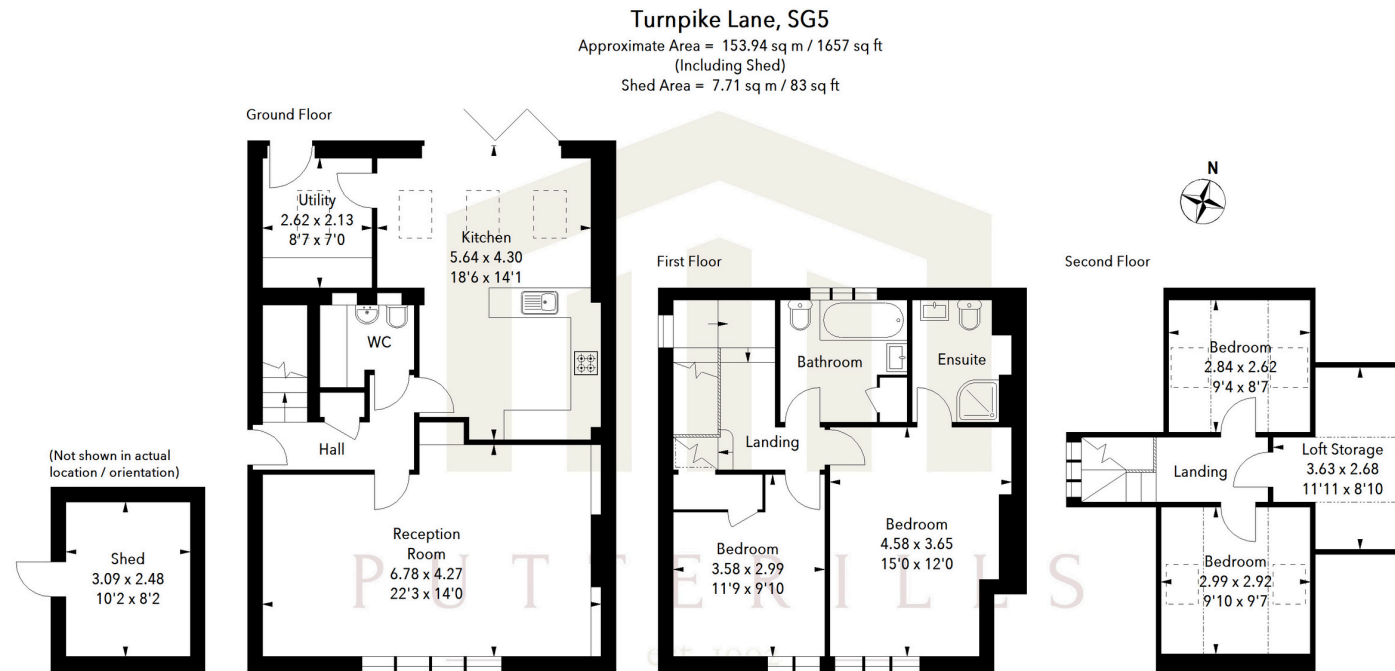
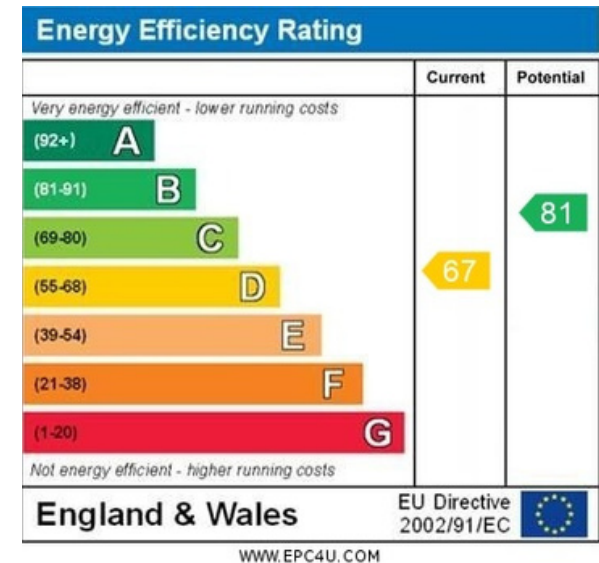


Illustration For Identification Purposes Only.
All measurements and areas are approximate, not to scale.
© Orange Tree Photography



Agents Note: Whilst every care has been taken to prepare these particulars, they are for guidance purposes only. All measurements are approximate and are for general guidance purposes only and whilst every care has been taken to ensure their accuracy, they should not be relied upon and potential buyers/tenants are advised to recheck the measurements



OFFICE ADDRESS

Putterills Hitchin
60 Hermitage Road
Hitchin
SG5 1DB

CONTACT DETAILS

01462 632222
hitchin@putterills.co.uk
www.putterills.co.uk