



**Maiden Cottages, Weston, Hitchin, SG4 7AG**  
**Guide Price: £425,000**  
**Freehold**



# PROPERTY SUMMARY

This beautifully refurbished two-bedroom character house on Maiden Street, Hitchin offers modern living within a tranquil village setting. Priced at £425,000, the property combines contemporary finishes with original charm, featuring a welcoming reception room, a modern kitchen, and a stylish bathroom. The two bedrooms are well-proportioned, offering flexibility and comfort.

A versatile outbuilding with power and lighting adds valuable space for use as a home office, studio, or gym. The peaceful rear garden provides a private outdoor retreat, while the location offers immediate access to countryside walks, perfect for an active lifestyle.

Located near Hitchin's amenities and transport links, this home is ideal for first-time buyers, downsizers, or investors. With potential to extend (subject to planning), and no need for further renovation, it offers a move-in-ready lifestyle in a highly desirable location. Viewing is strongly recommended.

2



1



1





































**Maiden Cottages,  
Maiden Street,  
Weston, SG4**

Approximate Area = 83.42 sq m / 898 sq ft  
(Including Gym & Shed)  
Gym Area = 8.08 sq m / 87 sq ft  
Shed Area = 3.81 sq m / 41 sq ft

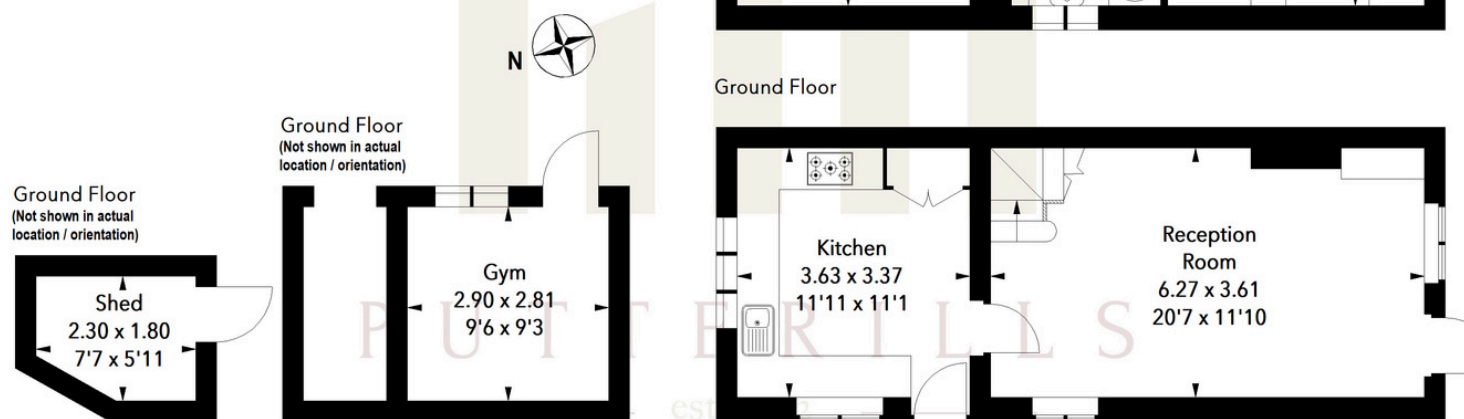


Illustration For Identification Purposes Only.  
All measurements and areas are approximate, not to scale.  
© Orange Tree Photography

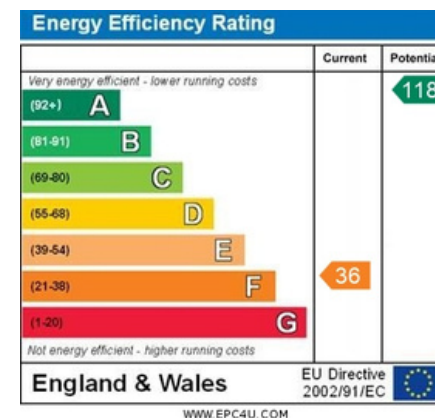
**LOCAL AUTHORITY :- Hertfordshire**

**TENURE:- Freehold**

**COUNCIL TAX BAND: C**

**VIEWINGS**

By prior appointment only



Agents Note: Whilst every care has been taken to prepare these particulars, they are for guidance purposes only. All measurements are approximate and are for general guidance purposes only and whilst every care is taken to ensure their accuracy, they should not be relied upon and potential buyers/tenants are advised to recheck the measurements



**OFFICE ADDRESS**  
Putterills Hitchin  
60 Hermitage Road  
Hitchin  
SG5 1DB

**CONTACT DETAILS**

01462 632222  
hitchin@putterills.co.uk  
www.putterills.co.uk