



Guide Price £495,000

Freehold

Hill View, Whitwell, Hitchin, SG4 8AX

PROPERTY SUMMARY

This stunning 3-bedroom house in the peaceful village of Whitwell, Hitchin, offers a stylish and comfortable living space. It features a spacious kitchen with a breakfast bar, an open-plan dining area, and two reception rooms for versatile living. The principal bedroom includes a cloakroom, and two additional bedrooms provide space for various needs. The property also boasts a modern downstairs bathroom and a detached summer house/office in the garden, perfect for remote work. The generous rear garden is ideal for outdoor activities, and ample off-street parking adds convenience. Located near local amenities and transport links, this home offers both tranquility and accessibility.

3



1



2



















Hill View, Whitwell, SG4

Approximate Area = 102.47 sq m / 1103 sq ft
(Including Shed & Garden Room)
Shed & Garden Room Area = 21.65 sq m / 233 sq ft

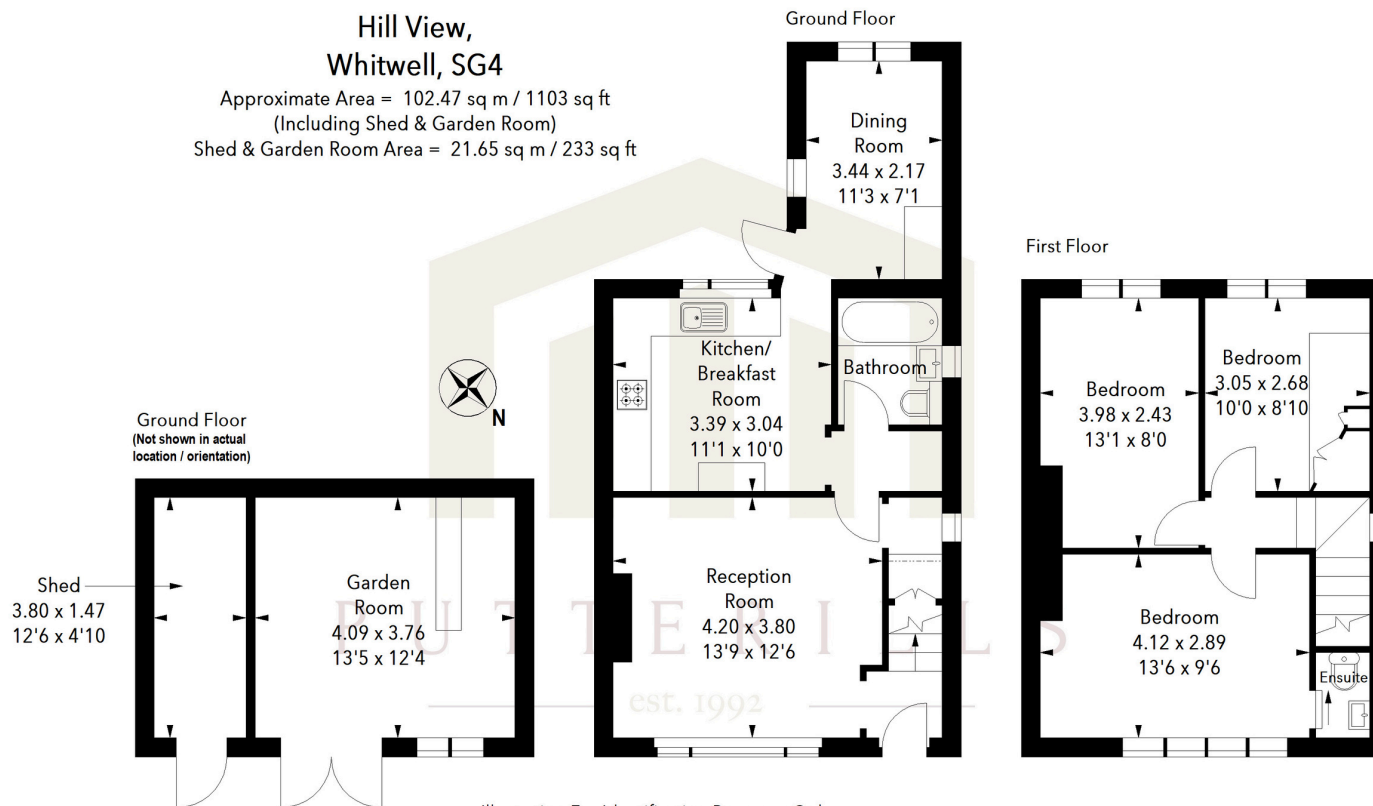


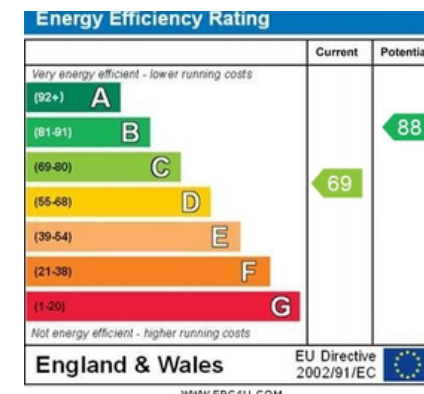
Illustration For Identification Purposes Only.
All measurements and areas are approximate, not to scale.
© Orange Tree Photography

LOCAL AUTHORITY
North Herts

TENURE
Freehold

COUNCIL TAX BAND
C

VIEWINGS
By prior appointment only



Agents Note: Whilst every care has been taken to prepare these particulars, they are for guidance purposes only. All measurements are approximate and are for general guidance purposes only and whilst every care has been taken to ensure their accuracy, they should not be relied upon and potential buyers/tenants are advised to recheck the measurements



OFFICE ADDRESS

Putterills Hitchin
60 Hermitage Road
Hitchin
SG5 1DB

CONTACT DETAILS

01462 632222
hitchin@putterills.co.uk
www.putterills.co.uk