



P U T T E R I L L S
— est. 1992 —

Guide Price £485,000

Freehold

Woolgrove Road, Hitchin, SG4 0AS

PROPERTY SUMMARY

This charming character property on Woolgrove Road, Hertfordshire, is an ideal home for a small family or professionals. It features two spacious bedrooms, a welcoming atmosphere, and convenient parking. The ground floor includes two reception rooms with elegant details like tasteful flooring and a fireplace. The modern kitchen, with ample storage, is complemented by a separate utility room and cloakroom. Upstairs, both bedrooms are bright and airy, and the bathroom offers a relaxing space. The property also boasts a large rear garden, perfect for outdoor enjoyment. Located near Hitchin Station and town center, it offers easy access to London and other cities. With its character, space, and ideal location, this property is a perfect family home or retreat for professionals.

2



1



2



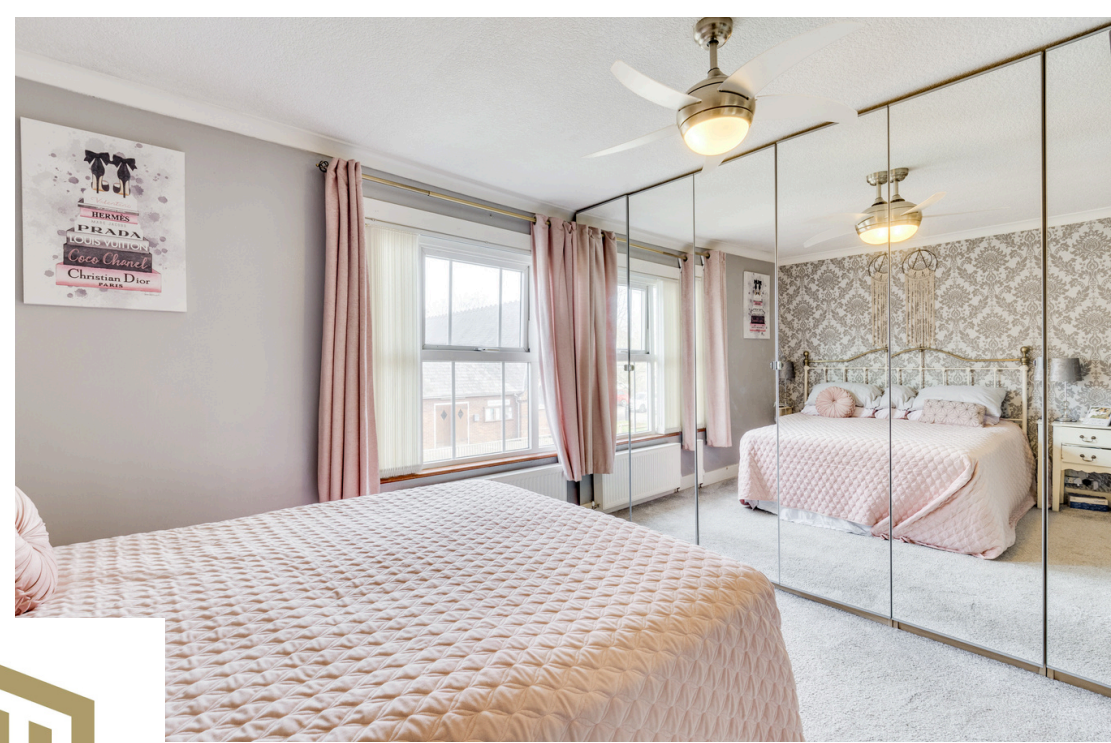






bon appétit













LOCAL AUTHORITY
North Herts

TENURE
Freehold

COUNCIL TAX BAND
B

VIEWINGS
By prior appointment only

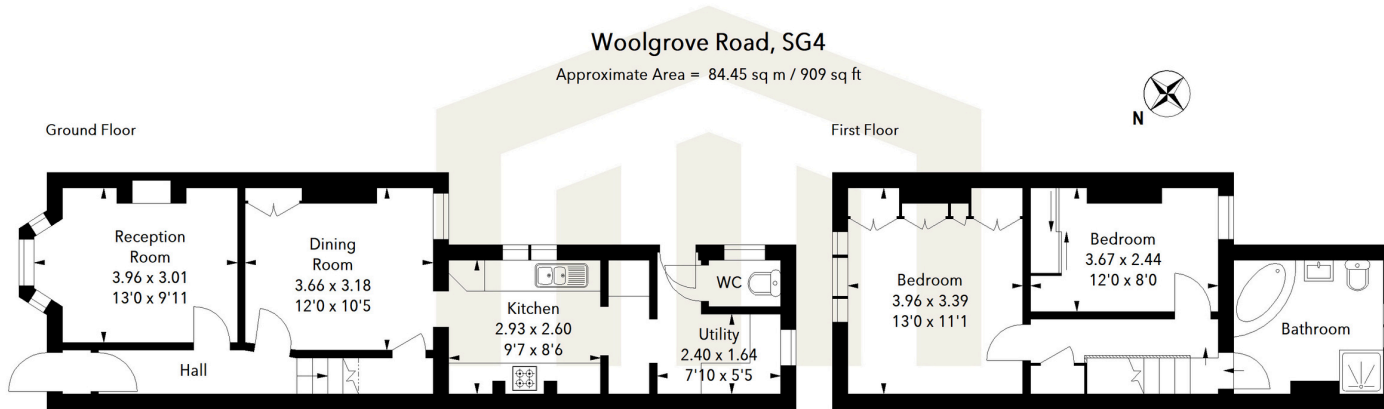
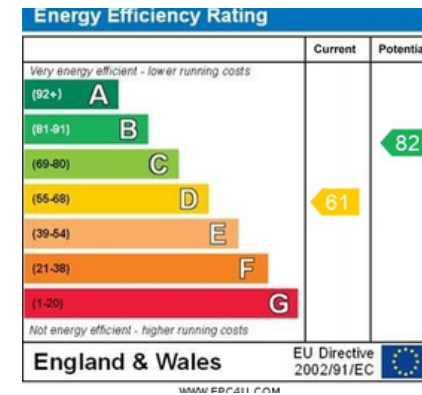


Illustration For Identification Purposes Only.
All measurements and areas are approximate, not to scale.
© Orange Tree Photography



Agents Note: Whilst every care has been taken to prepare these particulars, they are for guidance purposes only. All measurements are approximate and are for general guidance purposes only and whilst every care has been taken to ensure their accuracy, they should not be relied upon and potential buyers/tenants are advised to recheck the measurements



OFFICE ADDRESS

Putterills Hitchin
60 Hermitage Road
Hitchin
SG5 1DB

CONTACT DETAILS

01462 632222
hitchin@putterills.co.uk
www.putterills.co.uk