



PUTTERILLS

est. 1992



**Guide Price £525,000**

Starlings Bridge, Nightingale Road, Hitchin,  
Hertfordshire, SG5 1QW



# PROPERTY SUMMARY

We proudly present an exquisite 3-bedroom apartment that offers a harmonious blend of style, comfort, and convenience.

The moment you step into this apartment, you'll immediately notice the meticulous attention to detail. The open-plan living area creates a bright and spacious atmosphere, while high-quality fixtures and fittings add a touch of elegance to every corner. The tastefully designed interiors effortlessly combine contemporary elements with timeless charm, ensuring a home that will never go out of style.

3 

2 

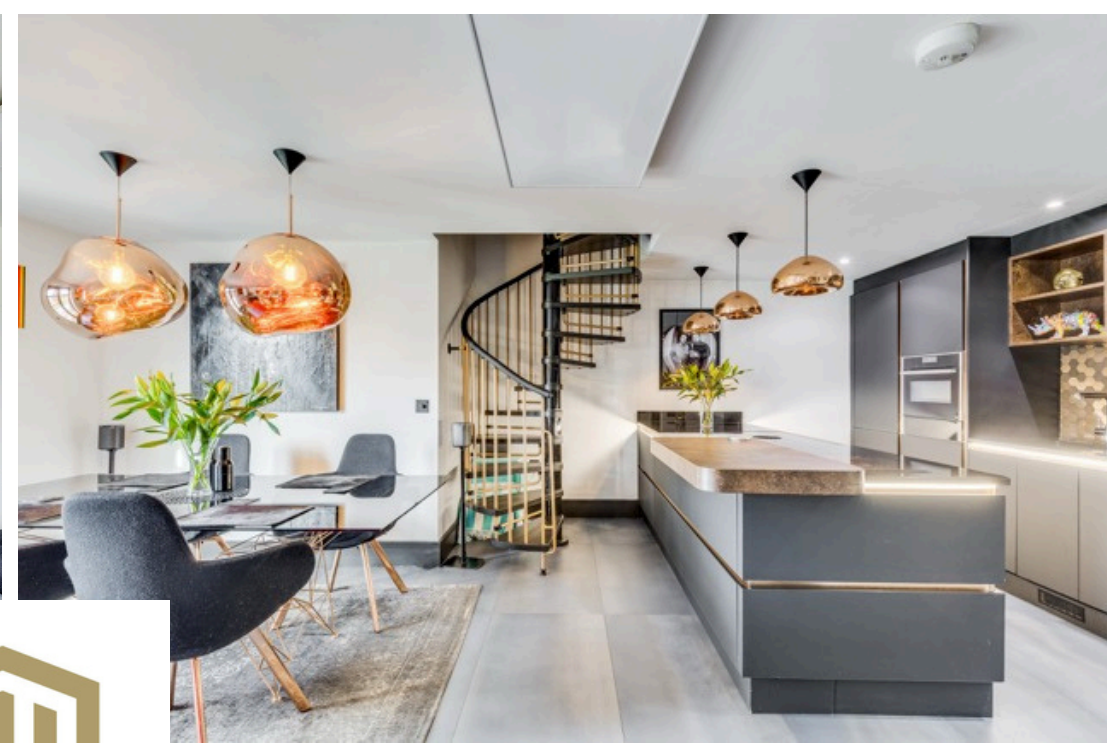
2 











PUTTERILLS  
est. 1992





















































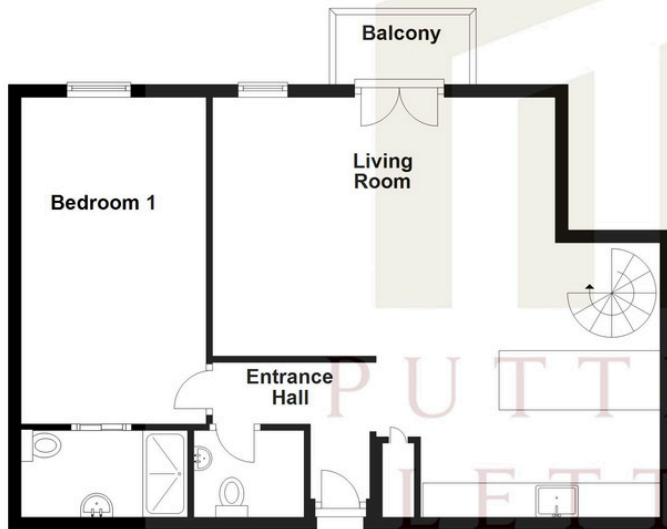
LOCAL AUTHORITY  
North Herts

TENURE  
Leasehold

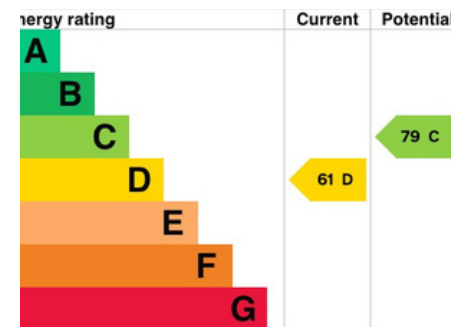
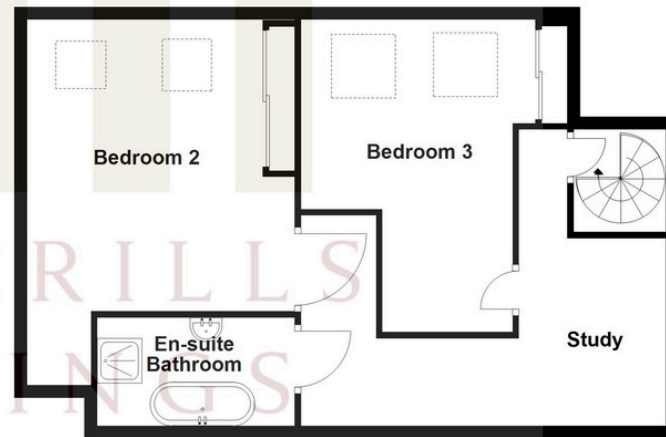
COUNCIL TAX BAND  
C

VIEWINGS  
By prior appointment only

**Ground Floor**  
Approx. 65.2 sq. metres (701.8 sq. feet)



**First Floor**  
Approx. 58.4 sq. metres (628.6 sq. feet)



Agents Note: Whilst every care has been taken to prepare these particulars, they are for guidance purposes only. All measurements are approximate and are for general guidance purposes only and whilst every care has been taken to ensure their accuracy, they should not be relied upon and potential buyers/tenants are advised to recheck the measurements



OFFICE ADDRESS  
Putterills Hitchin  
60 Hermitage Road  
Hitchin  
SG5 1DB

CONTACT DETAILS  
  
01462 632222  
hitchin@putterills.co.uk  
www.putterills.co.uk