



P U T T E R I L L S
— est. 1992 —

Guide Price £625,000
Freehold
Cambridge Cottages, Holwell Road, Hitchin, SG5 3SL

PROPERTY SUMMARY

This charming 3-bedroom, 2-bathroom house on Holwell Road offers a peaceful, semi-rural retreat just 4 miles from Hitchin. The property features ample off-street parking, a South-facing garden, and a spacious open-plan living area. The modern kitchen and dining area provide a bright, inviting space. The three bedrooms include a master with an en-suite bathroom. Additional outbuildings offer potential for a home office or studio. Located near a local farm shop and within easy reach of Hitchin, this home combines countryside tranquility with modern amenities. Perfect for family living, it's a must-see!

3



2



2





























LOCAL AUTHORITY
North Herts

TENURE
Freehold

COUNCIL TAX BAND
E

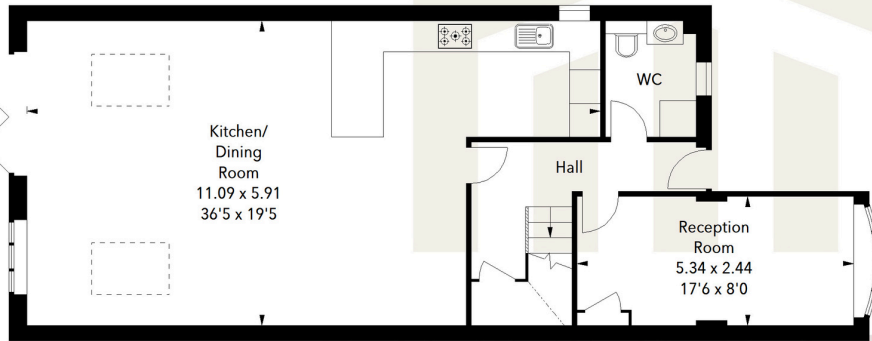
VIEWINGS

By prior appointment only

Cambridge Cottages, SG5

Approximate Area = 132.38 sq m / 1425 sq ft

Ground Floor



First Floor

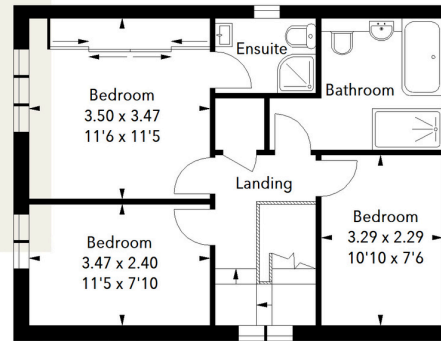
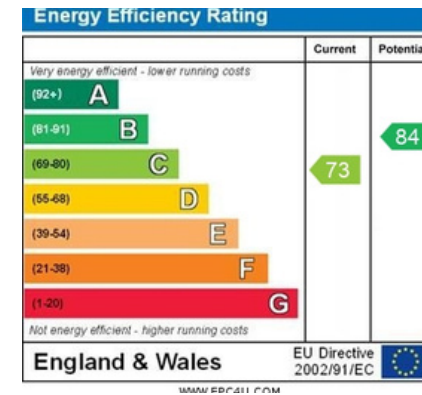


Illustration For Identification Purposes Only.
All measurements and areas are approximate, not to scale.



Agents Note: Whilst every care has been taken to prepare these particulars, they are for guidance purposes only. All measurements are approximate and are for general guidance purposes only and whilst every care has been taken to ensure their accuracy, they should not be relied upon and potential buyers/tenants are advised to recheck the measurements



OFFICE ADDRESS

Putterills Hitchin
60 Hermitage Road
Hitchin
SG5 1DB

CONTACT DETAILS

01462 632222
hitchin@putterills.co.uk
www.putterills.co.uk