



PUTTERILLS

est. 1992



Oakfield Avenue, Hitchin, SG4 9
Guide Price £780,000
Freehold

PROPERTY SUMMARY

This 4-bedroom chalet bungalow in Hitchin's sought-after Oakfield Avenue offers spacious, modern family living. With 3 bathrooms, 3 reception rooms, and a stunning open-plan kitchen/diner, it combines contemporary design with practicality. The master bedroom includes an en-suite, while the remaining bedrooms are well-sized and stylish.

The property features a large garden backing onto countryside, a generous driveway, and excellent proximity to top-rated schools. Convenient transport links, including a 30-minute train to London King's Cross, make it ideal for commuters. This beautifully presented home is perfect for families seeking comfort, style, and convenience.











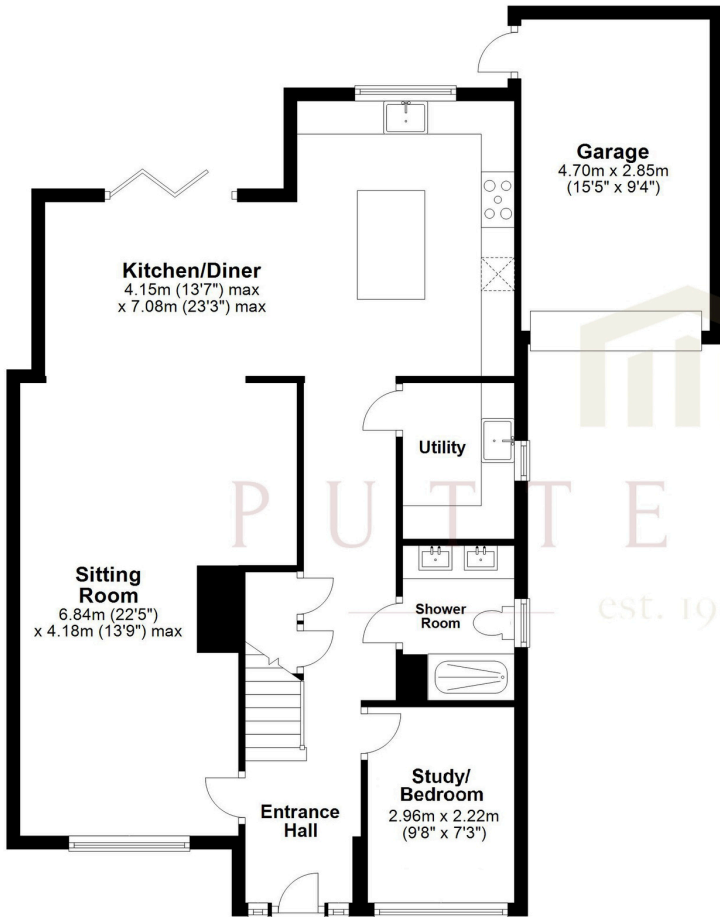






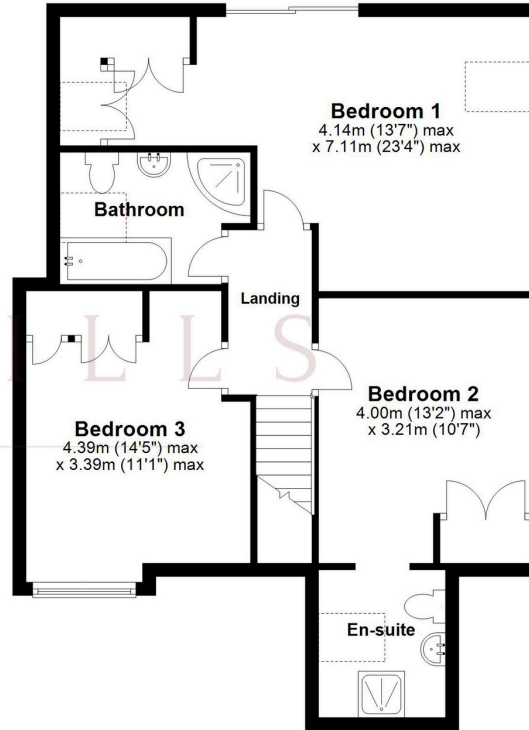
Ground Floor

Approx. 93.2 sq. metres (1002.8 sq. feet)



First Floor

Approx. 65.7 sq. metres (707.0 sq. feet)



Total area: approx. 158.9 sq. metres (1709.9 sq. feet)


Floor Plan measurements are approximate & for illustrative purposes only. While we do not doubt the floor plans accuracy, we make no guarantee, warranty or representation as to the accuracy and completeness of the floor plan.
Plan produced using PlanUp.

LOCAL AUTHORITY
North Herts

TENURE
Freehold

COUNCIL TAX BAND
D

VIEWINGS
By prior appointment only

Energy Efficiency Rating		
	Current	Potential
Very energy efficient - lower running costs		
(92+)	A	
(81-91)	B	
(69-80)	TBC	
(55-68)	D	
(39-54)	E	
(21-38)	F	
(1-20)	G	
Not energy efficient - higher running costs		
England & Wales		EU Directive 2002/91/EC 
WWW.EPC4U.COM		

Agents Note: Whilst every care has been taken to prepare these particulars, they are for guidance purposes only. All measurements are approximate and are for general guidance purposes only and whilst every care has been taken to ensure their accuracy, they should not be relied upon and potential buyers/tenants are advised to recheck the measurements



OFFICE ADDRESS

Putterills Hitchin
60 Hermitage Road
Hitchin
SG5 1DB

CONTACT DETAILS

01462 632222
hitchin@putterills.co.uk
www.putterills.co.uk