



P U T T E R I L L S

— est. 1992 —

Sherrardspark Road, Welwyn Garden City, AL8 7JP
Guide Price £1,500,000

PROPERTY SUMMARY

Nestled on the highly sought-after Sherrardspark Road, this magnificent five-bedroom detached family home presents a truly exceptional opportunity to acquire a residence in one of Welwyn Garden City's most prestigious addresses. Offered with a guide price of £1,500,000, this property combines generous living spaces with a substantial private garden, all within minutes of the vibrant town centre.

The garden provides a wonderful backdrop for family gatherings and offers significant potential for landscaping to create your dream outdoor oasis. Furthermore, the property itself holds considerable potential to extend, subject to the necessary planning permissions (STPP), allowing future owners to further enhance and tailor the home to their specific requirements and lifestyle.

5



3



4















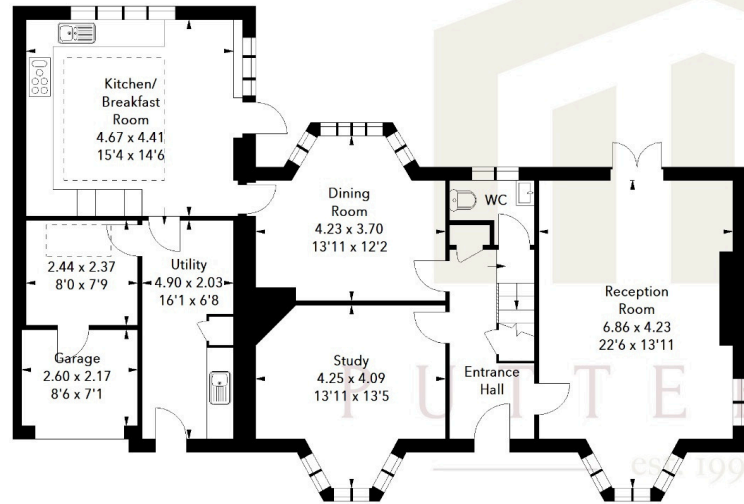




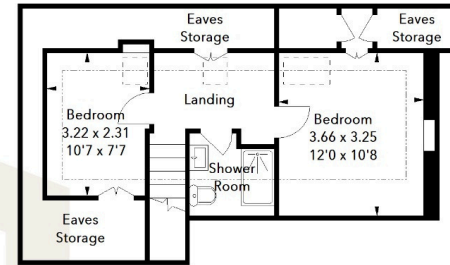
Sherrardspark Road, AL8

Approximate Area = 231.32 sq m / 2490 sq ft
(Including Eaves Storage)
Eaves Storage = 13.19 sq m / 142 sq ft

Ground Floor



Second Floor



First Floor

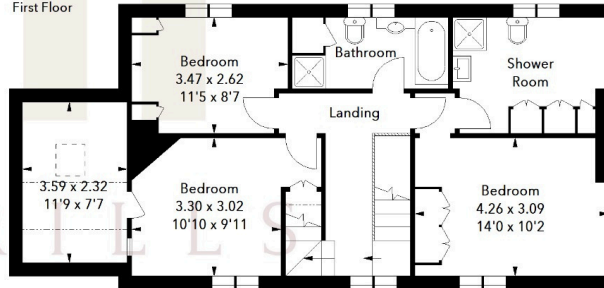


Illustration For Identification Purposes Only.
All measurements and areas are approximate, not to scale.
© Orange Tree Photography

LOCAL AUTHORITY
Welwyn Hatfield

TENURE
Leasehold

COUNCIL TAX BAND
G

VIEWINGS
By prior appointment only

EPC
TBC

Agents Note: Whilst every care has been taken to prepare these particulars, they are for guidance purposes only. All measurements are approximate and are for general guidance purposes only and whilst every care has been taken to ensure their accuracy, they should not be relied upon and potential buyers/tenants are advised to recheck the measurements



OFFICE ADDRESS
34 Wigmores North
Welwyn Garden
City
Hertfordshire
AL8 6PH

CONTACT DETAILS
[01707 393333](tel:01707393333)
lwgc@putterills.co.uk
www.putterills.co.uk