




PUTTERILLS
— est. 1992 —

**6 Chessum Road, Langford, Biggleswade,
Bedfordshire, SG18 9FU
Guide Price £720,000**

PROPERTY SUMMARY

This stunning 5-bedroom family home located in the tranquil village setting of Chessum Road, Biggleswade. The property features a spacious reception room, a modern 20ft kitchen diner ideal for entertaining, and five generously sized double bedrooms. With three stylish bathrooms, a double garage, and a driveway for multiple vehicles, this home is both functional and luxurious. The rear garden offers a low-maintenance outdoor space, perfect for alfresco dining. Situated in a quiet cul de sac, the home provides a peaceful lifestyle with convenient access to local amenities and transport links.

5



3



1







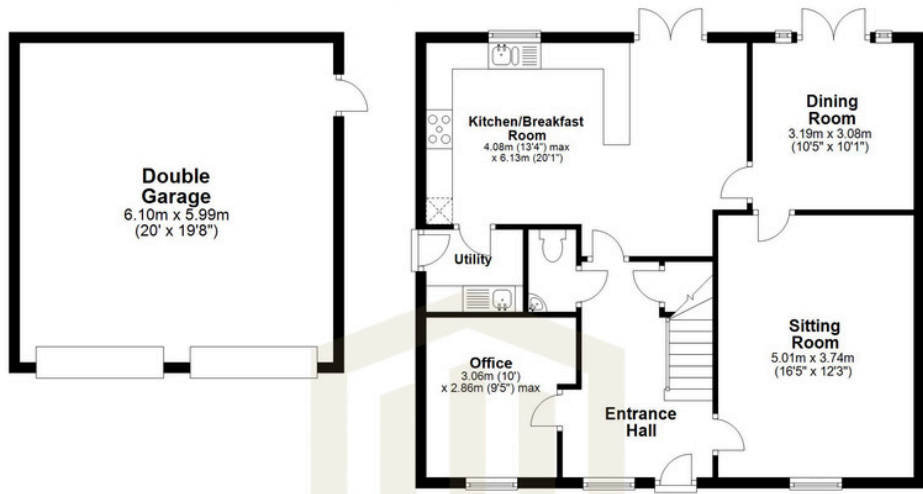




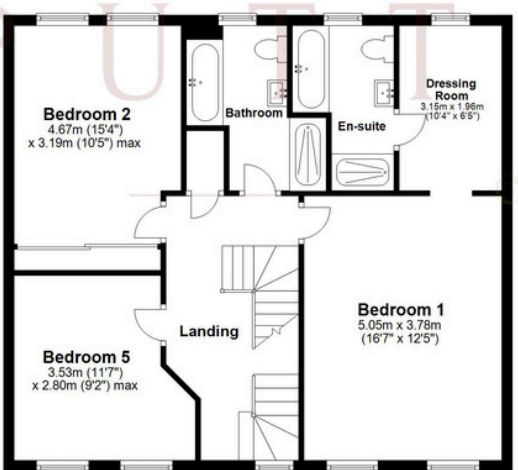




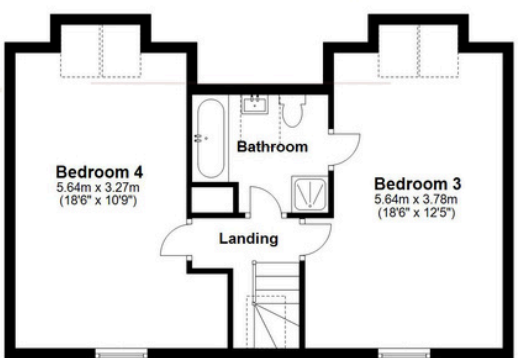
Ground Floor
Main area: approx. 77.2 sq. metres (831.1 sq. feet)
Plus garages: approx. 36.5 sq. metres (393.2 sq. feet)



First Floor
Approx. 77.2 sq. metres (831.1 sq. feet)



Second Floor
Approx. 51.9 sq. metres (558.6 sq. feet)

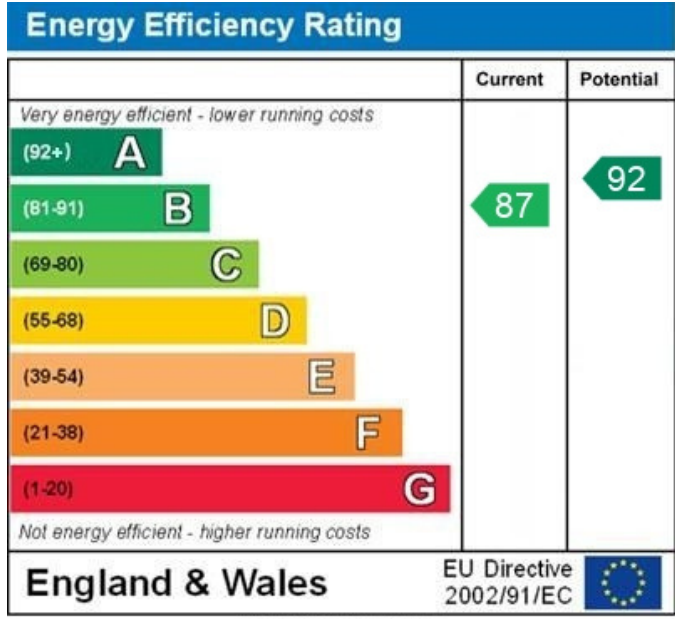


Main area: Approx. 206.3 sq. metres (2220.7 sq. feet)
Plus garages: approx. 36.5 sq. metres (393.2 sq. feet)

Floor Plan measurements are approximate & for illustrative purposes only. While we do not doubt the floor plans accuracy, we make no guarantee, warranty or representation as to the accuracy and completeness of the floor plan.
Plan produced using PlanUp.

LOCAL AUTHORITY
North Herts
TENURE
Freehold

COUNCIL TAX BAND: G
VIEWINGS
By prior appointment only



WWW.EPC4U.COM

Agents Note: Whilst every care has been taken to prepare these particulars, they are for guidance purposes only. All measurements are approximate and are for general guidance purposes only and whilst every care has been taken to ensure their accuracy, they should not be relied upon and potential buyers/tenants are advised to recheck the measurements



OFFICE ADDRESS
Putterills Hitchin
60 Hermitage Road
Hitchin
SG5 1DB

CONTACT DETAILS
01462 632222
hitchin@putterills.co.uk
www.putterills.co.uk