



PUTTERILLS

est. 1992

Guide Price £575,000

Hiz Cottage, Nightingale Road, SG5 1QT

Freehold

EPC: D

PROPERTY SUMMARY

This charming 3-bedroom cottage on Nightingale Road in Hitchin offers a unique opportunity to own a characterful home in a sought-after location. The property features two spacious reception rooms, a kitchen with a walk-in larder, a cloakroom/utility, and three well-appointed bedrooms. The bathroom includes a separate shower cubicle for added convenience. Outside, the sunny rear garden provides space for outdoor activities, and there is a garage for secure parking or storage.

Located just 0.4 miles from Hitchin Train Station, the home offers easy access to commuting and local amenities, including schools, shops, and eateries. The property is chain-free and blends traditional charm with modern functionality, making it an ideal choice for those seeking a peaceful yet convenient living space. Act quickly, as this property is expected to sell fast!

3



1



2



















LOCAL AUTHORITY
North Herts

TENURE
Freehold

COUNCIL TAX BAND
C

VIEWINGS
By prior appointment only

Nightingale Road, SG5

Approximate Area = 96.43 sq m / 1038 sq ft
(Including Garage)
Garage Area = 14.03 sq m / 151 sq ft

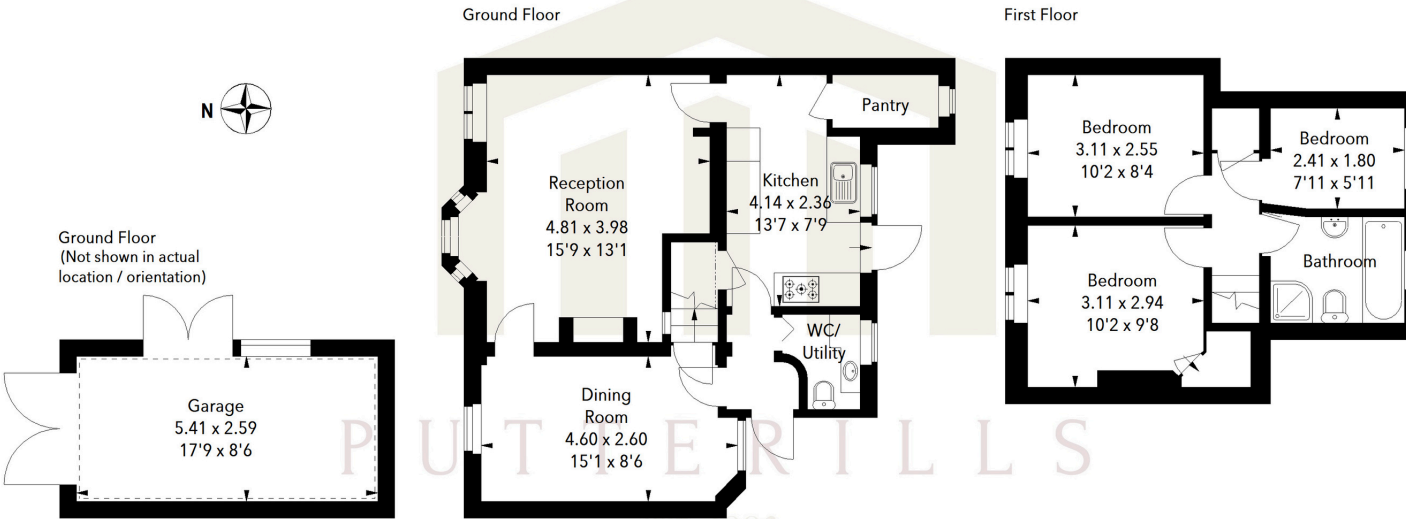
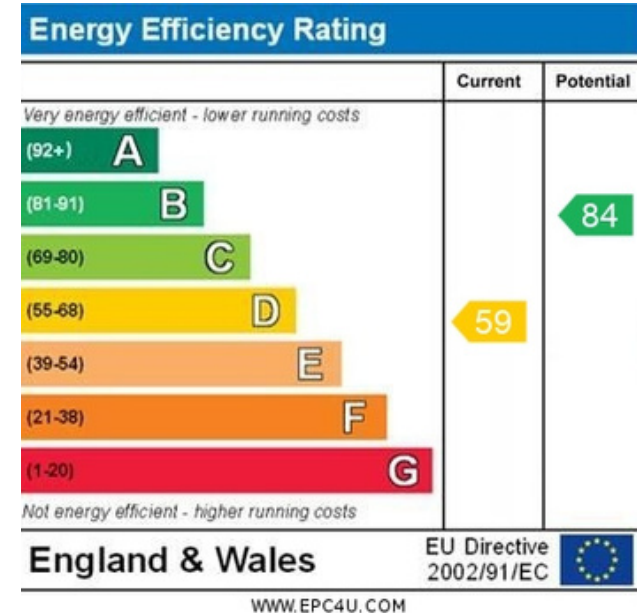


Illustration For Identification Purposes Only.
All measurements and areas are approximate, not to scale.
© Orange Tree Photography



Agents Note: Whilst every care has been taken to prepare these particulars, they are for guidance purposes only. All measurements are approximate and are for general guidance purposes only and whilst every care has been taken to ensure their accuracy, they should not be relied upon and potential buyers/tenants are advised to recheck the measurements



OFFICE ADDRESS

Putterills Hitchin
60 Hermitage Road
Hitchin
SG5 1DB

CONTACT DETAILS

01462 632222
hitchin@putterills.co.uk
www.putterills.co.uk