



PUTTERILLS

est. 1992

31, Starlings Bridge, Hitchin, SG5 1QW

Leasehold

Offers Over: £270,000

EPC: B

PROPERTY SUMMARY

This 2-bedroom flat in Starlings Bridge, Hitchin, offers a blend of style, comfort, and convenience, ideal for first-time buyers or downsizers. Located near local amenities, the town center, and the train station, the flat provides easy access to shops, cafes, and commuting routes. The open-plan living area connects the kitchen, dining, and living spaces, with a private balcony for relaxation. The main bedroom features an ensuite, and the flat includes allocated undercroft parking. With affordable pricing, it's a great opportunity to step onto the property ladder.

2



2



1





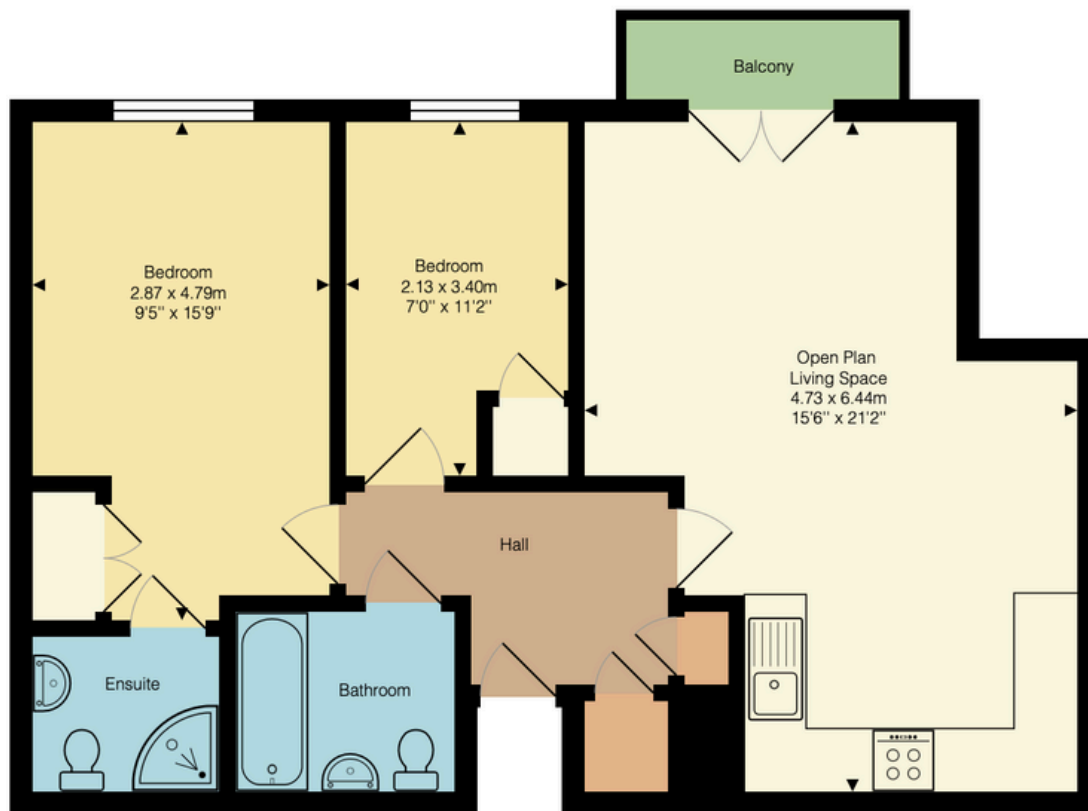












Starlings Bridge, Nightingale Road, Hitchin, SG5 1QW

Approximate Total Area: 60.6 m² ... 652 ft² (excluding balcony)

This plan is for illustrative purposes only. Measurements and positions of doors, windows, and fixtures are approximate and should not be relied upon.

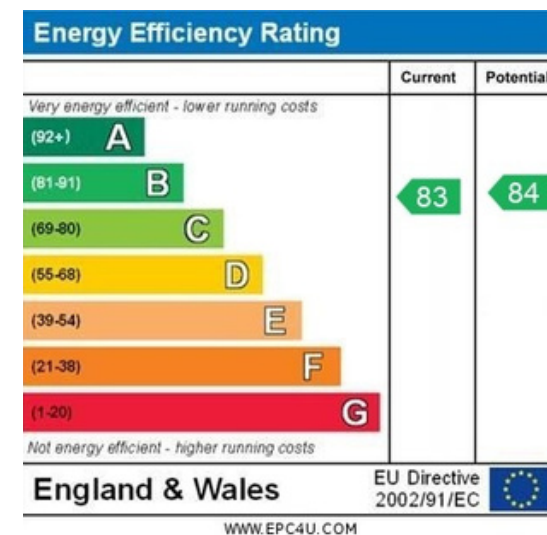
LOCAL AUTHORITY
Hertfordshire

TENURE Leasehold

COUNCIL TAX BAND: C

VIEWINGS

By prior appointment only



Agents Note: Whilst every care has been taken to prepare these particulars, they are for guidance purposes only. All measurements are approximate and are for general guidance purposes only and whilst every care is taken to ensure their accuracy, they should not be relied upon and potential buyers/tenants are advised to recheck the measurements



OFFICE ADDRESS
Putterills Hitchin
60 Hermitage Road
Hitchin
SG5 1DB

CONTACT DETAILS

01462 632222
hitchin@putterills.co.uk
www.putterills.co.uk