



Longcroft Lane, Welwyn Garden City, AL8 6EJ
Guide Price: £725,000
EPC: C

PROPERTY SUMMARY

Situated on the sought-after West Side of Welwyn Garden City, this beautifully presented four-bedroom semi-detached home offers a living room with fireplace, a conservatory overlooking a landscaped garden, and a generous kitchen/breakfast room with integrated appliances.

It offers four bedrooms—three upstairs with a modern bathroom, and one on the ground floor with a separate shower room, ideal as a guest room or study.

Outside, enjoy a private garden and large driveway with ample parking. Located on a desirable road near top schools, shops, and the mainline station.

4



2



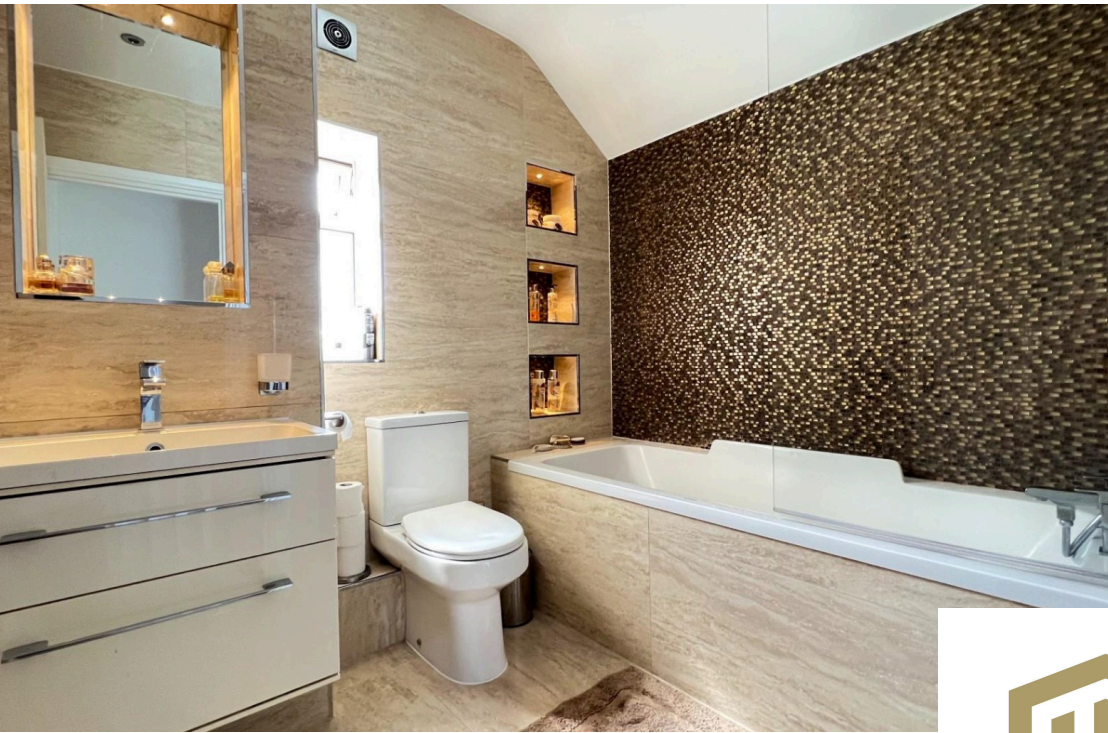
2



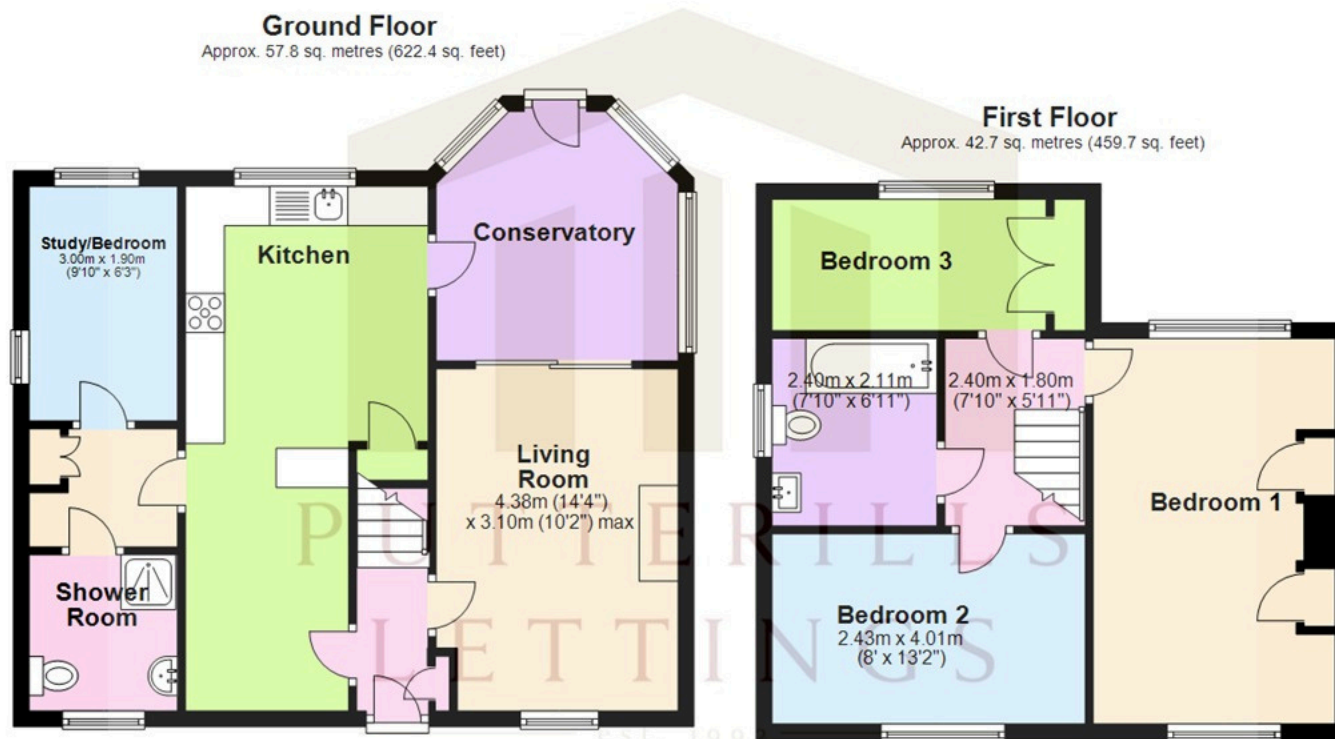












LOCAL AUTHORITY
Welwyn Hatfield

TENURE
Freehold

COUNCIL TAX BAND
E

VIEWINGS
By prior appointment only

Score	Energy rating	Current	Potential
92+	A		
81-91	B		81 B
69-80	C	71 C	
55-68	D		
39-54	E		
21-38	F		
1-20	G		

Agents Note: Whilst every care has been taken to prepare these particulars, they are for guidance purposes only. All measurements are approximate and are for general guidance purposes only and whilst every care has been taken to ensure their accuracy, they should not be relied upon and potential buyers/tenants are advised to recheck the measurements



OFFICE ADDRESS

34 Wigmores North
Welwyn Garden
City Hertfordshire
AL8 6PH

CONTACT DETAILS

01707 393333
wgc@putterills.co.uk
www.putterills.co.uk