



The Hollow, Station Road, Lower Stondon, Bedfordshire, SG16 6JL

Guide Price: £585,000



PUTTERILLS

est. 1992

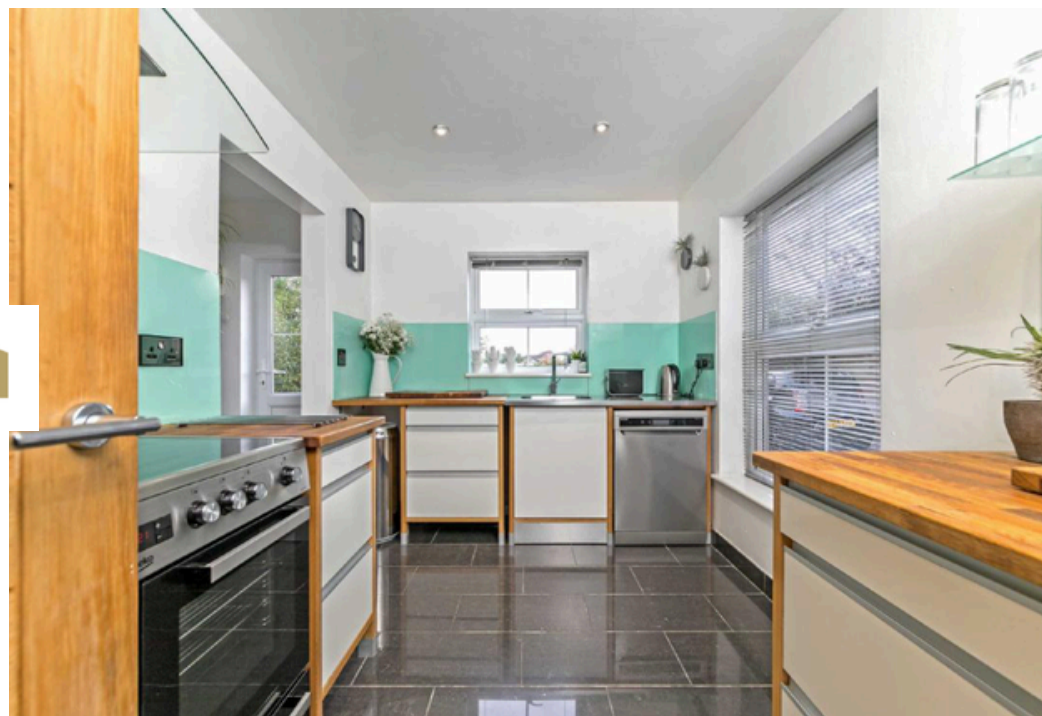
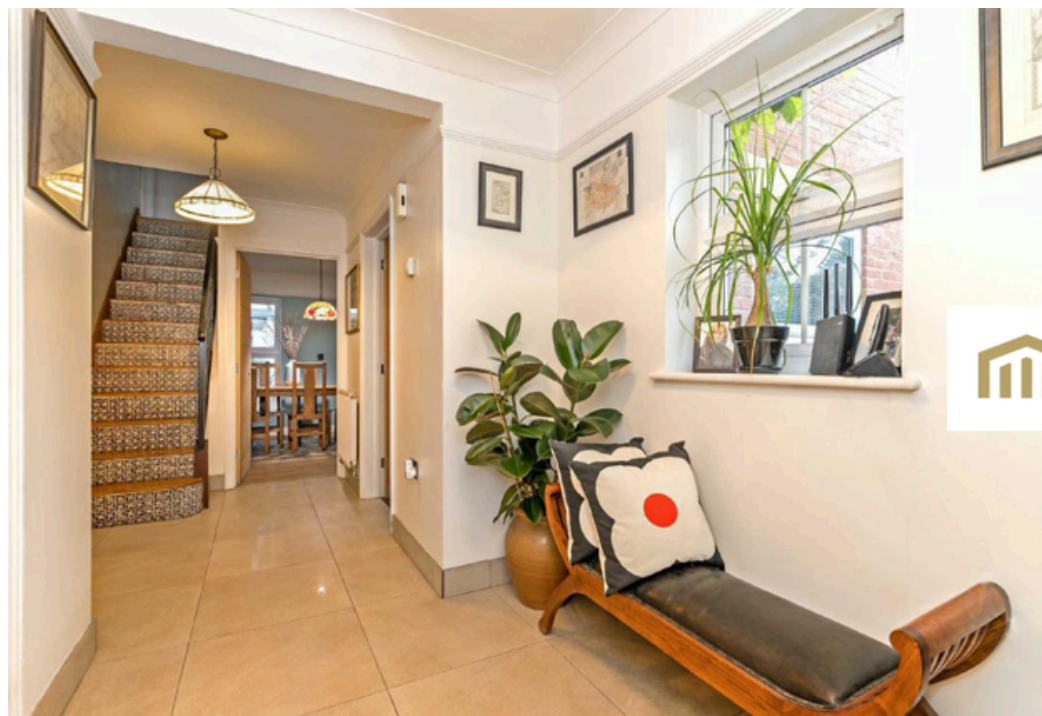
A spacious and beautifully presented five bedroom detached residence in a delightful tucked away location.

This individual designed five bedroom detached house is beautifully presented and offers spacious accommodation includes an entrance hall with cloakroom off, large sitting room with open fireplace and good size dining room. The kitchen is well fitted and leads to a utility room. The large crescent shaped conservatory provides a lovely vista over the garden.

To the first floor there are four double bedrooms, bedroom two with en-suite shower room and family bathroom. The second floor is a real feature to the property being a suite dedicated to the master bedroom with dressing room and en-suite shower room.

Externally the property offers a driveway providing ample off road parking leading to a garage and wrap around garden. The property is superbly located in a tucked away position off Station Road and an early appointment to view is highly recommended.

Lower Stondon is a delightful village situated just north of Hitchin in Hertfordshire. The village has a number of general stores, hairdressers and a selection of takeaways. Major supermarkets and other well known retailers can be found in Hitchin, five miles away. Leisure centres can be found in Letchworth, Bedford and Hitchin. In the village itself there is a small recreational ground, village hall, greyhound track and equestrian centre. Education is provided locally by Stondon and Derwent Schools and Bloomfield and Henlow Middle Schools. The upper school for the area is Samuel Whitbread in Clifton which is five miles away. There is a surgery in Stondon with its own chemist on site and Mount Pleasant Golf Club. The property is located opposite the local shops, the driveway is next to number 30a.









Total area: approx. 174.8 sq. metres (1881.6 sq. feet)