



PUTTERILLS  
— est. 1992 —

**Guide Price £675,000**

Green Lane Letchworth Garden City SG6 1ED

Leasehold



# PROPERTY SUMMARY

Explore this inviting property in Green Lane, boasting 4 bedrooms, 2 bathroom, and 2 reception rooms, a stunning conservatory a mature private garden and a driveway leading to a garage. An ideal abode for any growing family seeking ample space and comfort.

4



2



2





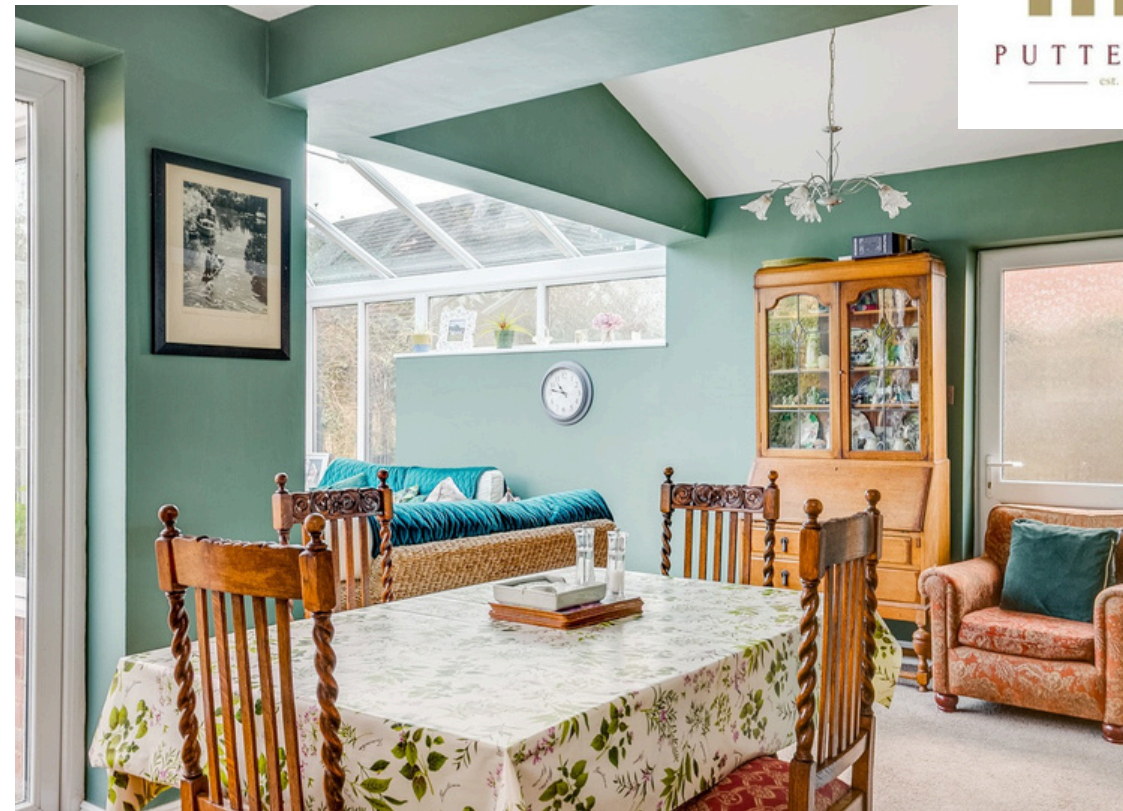


beko

Home  
Sweet  
Home

Water Dispenser























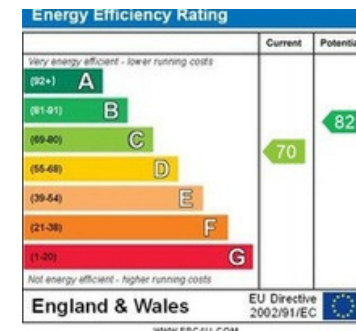
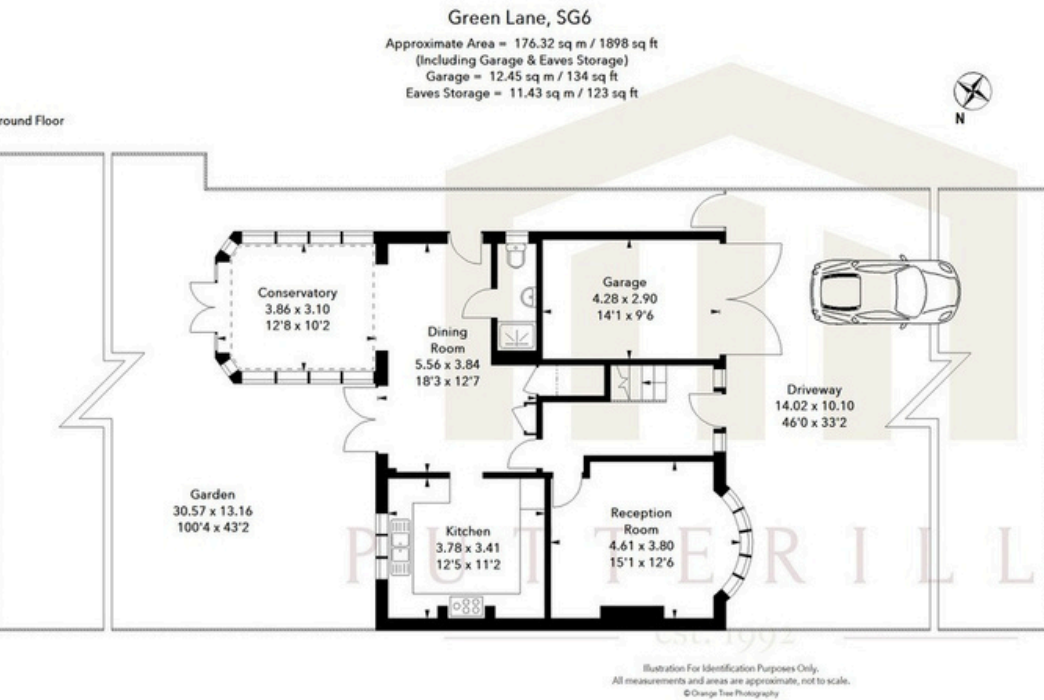




**LOCAL AUTHORITY**  
**North Herts**  
**TENURE**  
**Leasehold**

**COUNCIL TAX BAND**  
**E**

**VIEWINGS**  
 By prior appointment only



Agents Note: Whilst every care has been taken to prepare these particulars, they are for guidance purposes only. All measurements are approximate and are for general guidance purposes only and whilst every care has been taken to ensure their accuracy, they should not be relied upon and potential buyers/tenants are advised to recheck the measurements



**OFFICE ADDRESS**  
 Putterills Hitchin  
 60 Hermitage Road  
 Hitchin  
 SG5 1DB

**CONTACT DETAILS**

01462 632222  
 hitchin@putterills.co.uk  
 www.putterills.co.uk