



PUTTERILLS

est. 1992



**£699,950 Freehold**  
**Lancaster Road**  
**Hitchin**



# PROPERTY SUMMARY

Discover the perfect family home in Hitchin with this stunning 4 bedroom, 2 bathroom property featuring 2 spacious reception rooms. Don't miss out on this incredible opportunity.

4



2



2





















LOCAL AUTHORITY  
North Herts

TENURE  
Freehold  
COUNCIL TAX BAND  
C

VIEWINGS

By prior appointment only

Lancaster Road, SG5

Approximate Area = 116.78 sq m / 1257 sq ft  
(Including Eaves Storage & Excluding Shed)  
Eaves Storage  
Shed Area = 5.67 sq m / 61 sq ft

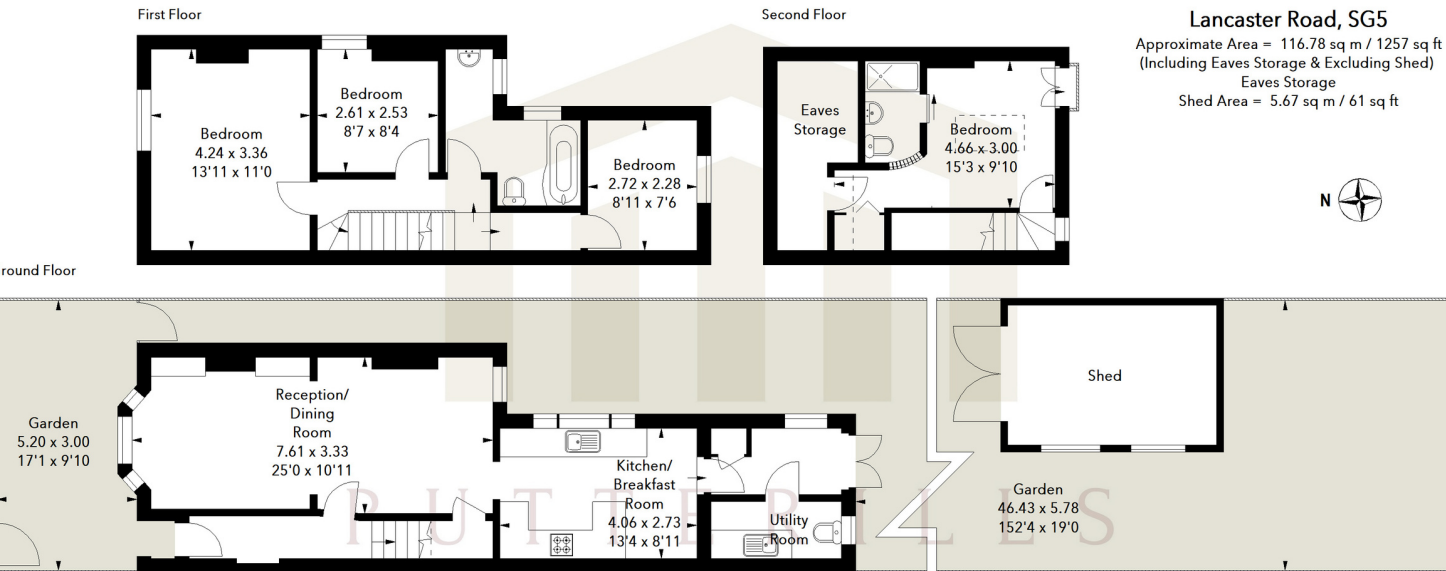
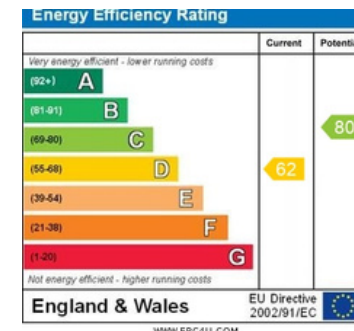


Illustration For Identification Purposes Only.  
All measurements and areas are approximate, not to scale.  
© Orange Tree Photography



Agents Note: Whilst every care has been taken to prepare these particulars, they are for guidance purposes only. All measurements are approximate and are for general guidance purposes only and whilst every care has been taken to ensure their accuracy, they should not be relied upon and potential buyers/tenants are advised to recheck the measurements



OFFICE ADDRESS

Putterills Hitchin  
60 Hermitage Road  
Hitchin  
SG5 1DB

CONTACT DETAILS

01462 632222  
hitchin@putterills.co.uk  
www.putterills.co.uk