



PUTTERILLS

est. 1992



**£475,000 Freehold**  
**Uplands Avenue**  
**Hitchin**

# PROPERTY SUMMARY

This versatile bungalow in SG4 9 area offering a terrific opportunity to make your own , garage, driveway, and a stunning private rear garden. A must-see property in Hitchin!

2



1



2



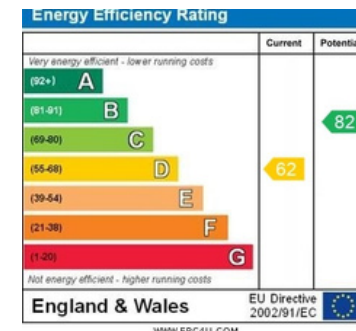
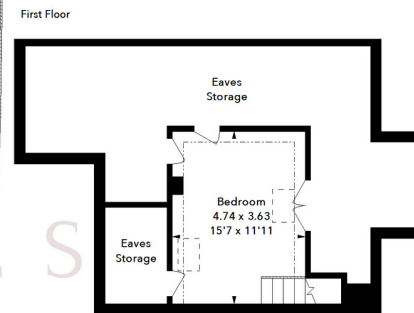
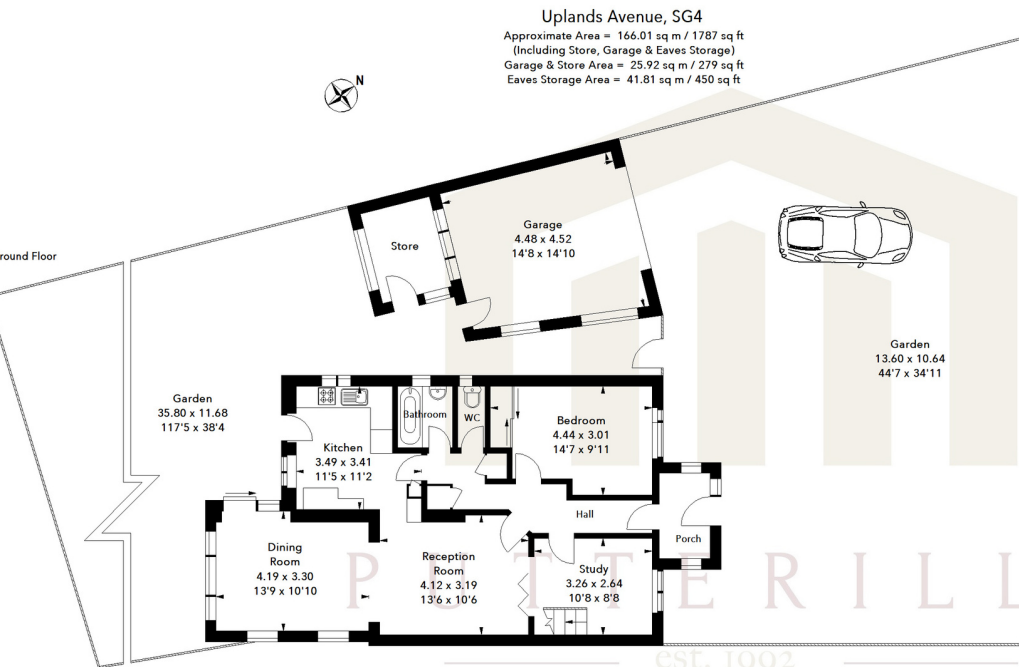




LOCAL AUTHORITY  
North Herts

TENURE  
Freehold  
COUNCIL TAX BAND  
C

VIEWINGS  
By prior appointment only



Agents Note: Whilst every care has been taken to prepare these particulars, they are for guidance purposes only. All measurements are approximate and are for general guidance purposes only and whilst every care has been taken to ensure their accuracy, they should not be relied upon and potential buyers/tenants are advised to recheck the measurements



OFFICE ADDRESS

Putterills Hitchin  
60 Hermitage Road  
Hitchin  
SG5 1DB

CONTACT DETAILS

01462 632222  
hitchin@putterills.co.uk  
www.putterills.co.uk