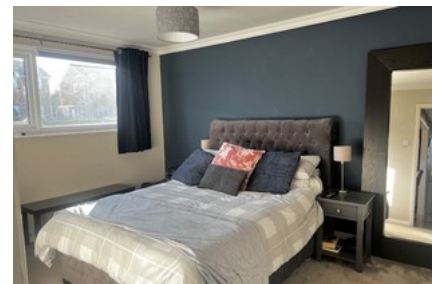




Copsewood Road Hythe



- ✔ Two Bedroom First Floor Maisonette
- ✔ Modern Kitchen And Bathroom Suites
- ✔ Double Glazed And Gas Radiator Heating
- ✔ Garage In Block Directly To The Rear Of The Property
- ✔ Rear, Side And Front Gardens
- ✔ Popular Location On Hollybank
- ✔ Click On The Virtual Tour For A Full Internal Inspection
- ✔ Ideal For So Many Purposes
- ✔ Remainder Of A 999 Year Lease
- ✔ Call Us Now To Book A Viewing

Offers in Excess of **£230,000**

Bedroom 2 Bathroom 1 Reception 1