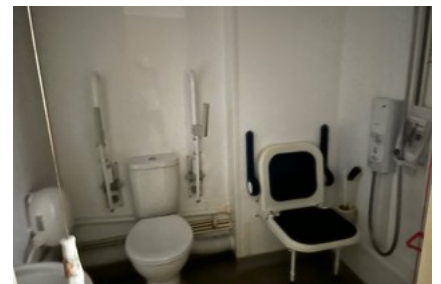




Langdown Lawn Hythe



- ✔ Ground Floor Retirement Flat
- ✔ Outlook Over Gardens
- ✔ Popular Location Close To Shops And Facilities
- ✔ No Onward Chain
- ✔ Remainder Of A 99 Year Lease
- ✔ Service Charge Equates To Approx 250 Per Month
- ✔ Double Glazed And Night Storage Heating
- ✔ Communal Residents Lounge And Laundry Room
- ✔ Communal Grounds And Parking Areas
- ✔ Call Us Now To Book A Viewing

£79,950

Bedroom 1 Bathroom 1 Reception 1