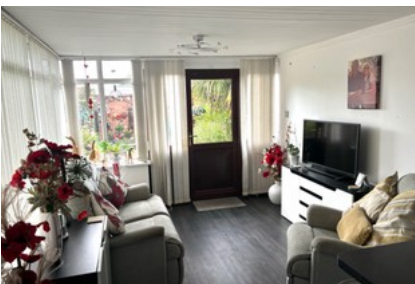




Springfield Avenue Holbury



- ✓ Unique Detached Bungalow
- ✓ Located In A Popular Road
- ✓ No Onward Chain
- ✓ Garage And Off Road Parking
- ✓ Flexible Layout
- ✓ Kitchen/breakfast Room
- ✓ Well Stocked Gardens With Summer House
- ✓ Double Glazed And Gas Radiator Heating
- ✓ Close To New Forest National Park
- ✓ Call Us Now To Book A Viewing

£360,000

Bedroom 3 Bathroom 1 Reception 2