

# Love Homes



Millfield Close, Flitwick, Bedfordshire, MK45 1LB



This beautifully finished home features a bright, high-spec interior and a spacious 17'10" living room with garden views and a cozy log burner. The adjoining lounge/diner includes a roof lantern and garden access, with air conditioning for year-round comfort. The sleek modern kitchen boasts integrated appliances and ample storage. There are three double bedrooms and a stylish bathroom with a separate shower. Outside, the stunning 140ft west-facing garden is landscaped with herb, vegetable, and wildflower areas, fruit trees, and vibrant borders. Extras include a garage, off-road parking, garden studio, veranda, pergola, shed, and greenhouses.



This property is presented by Duncan Stead - a Love Homes property expert with over 25 years' experience.

Find out more about this property by scanning the QR code.



0.6m



3



2



1

Tenure: Freehold

Council Tax: F



Selling properties in **Flitwick**, Silsoe, **Amphill**, Toddington, **Barton Le Clay**, Clophill and surrounding villages



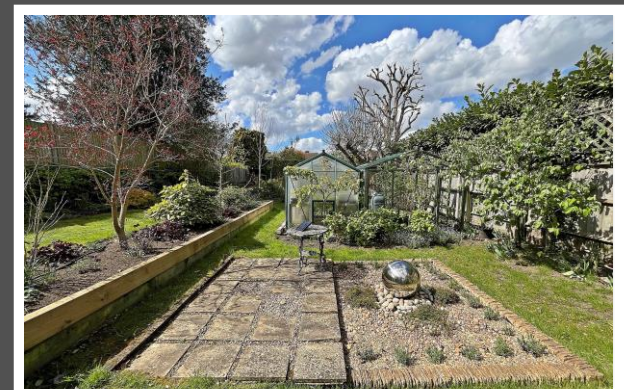




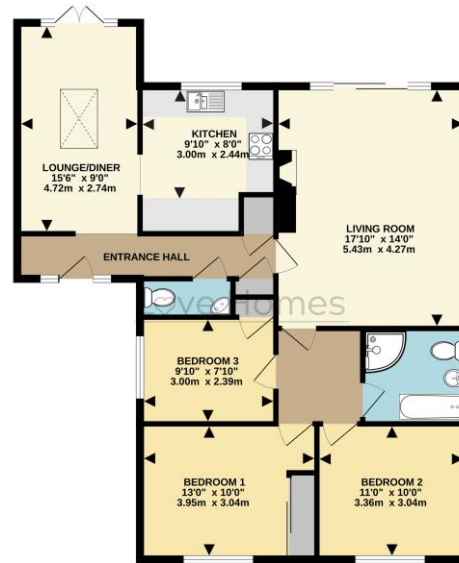
---

"We've absolutely loved living here for the past 12 years. When we first bought the bungalow, it was a bit of a project but we could see the potential straight away. Over the years, we've really made it our own - modernising throughout and adding features like air conditioning and, more recently, solar panels with battery storage to make the home more efficient and comfortable. What we've cherished most, though, is the garden. It really is a special space. With a garden like this, you do need a love for plants and gardening, but for us, it's been a joy. It's so peaceful and private and perfect for unwinding or spending time with friends and family, whether that's relaxing under the pergola or enjoying a sunny afternoon pottering about. People always say they'd take their home with them if they could, but in our case, it really is true. If we could pick it up and move it with us we absolutely would."

---



GROUND FLOOR  
996 sq.ft. (92.5 sq.m.) approx.



TOTAL FLOOR AREA: 996 sq.ft. (92.5 sq.m.) approx.  
Drawn by Love Homes for illustrative purposes only. Measurements and areas shown are approximate. Made with Mapbox (2023).

Score	Energy rating	Current	Potential
92+	A	92 A	96 A
81-91	B		
69-80	C		
55-68	D		
39-54	E		
21-38	F		
1-20	G		

5 The Russell Centre, Coniston Road, Flitwick, MK45 1QY  
Tel: 01525 713111

Email: [flitwick@lovehomes.uk](mailto:flitwick@lovehomes.uk)

[www.lovehomes.uk](http://www.lovehomes.uk)



These particulars are set out as a general outline in accordance with the Property Misdescriptions Act (1991) only for the guidance of intending purchasers or lessees, and do not constitute any part of an offer or contract. Details are given without any responsibility, and any intending purchasers, lessees or third parties should not rely on them as statements or representations of fact but must satisfy themselves by inspection or otherwise as to the correctness of each of them. We have not carried out a structural survey and the services, appliances and specific fittings have not been tested. All photographs, measurements, floor plans and distances referred to are given as a guide only and should not be relied upon for the purchase of carpets or any other fixtures or fittings. Gardens, roof terraces, balconies and communal gardens as well as tenure and lease details cannot have their accuracy guaranteed for intending purchasers. Lease details, service ground rent (where applicable) are given as a guide only and should be checked and confirmed by your solicitor prior to exchange of contracts. No person in the employment of Love Homes has any authority to make any representation or warranty whatever in relation to this property. Purchase prices, rents or other prices quoted are correct at the date of publication and, unless otherwise stated, are exclusive of VAT. We retain the copyright in all advertising material used to market this Property. All information is as advised by the seller and subject to change. Council tax bands can be subject to change by the local council.

**Love Homes**