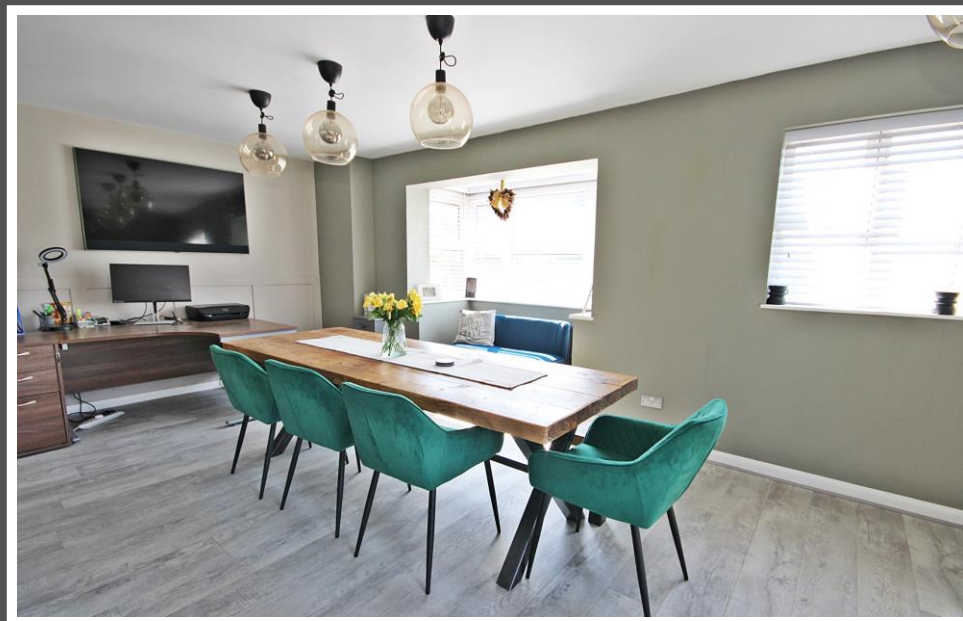


Love Homes



Wheatlands Close, Maulden, Bedfordshire, MK45 2AQ

Step into a grand hallway leading to spacious ground floor rooms, including a 21ft lounge with a box bay window and log burner, and a 19ft dining room perfect for entertaining. The large, well-equipped kitchen includes a handy storage cupboard, with a re-fitted downstairs W.C. nearby. Upstairs, four double bedrooms offer comfort and space—two with en suites, including a newly refurbished master. One bedroom features an extra room ideal as a study, wardrobe, or additional en suite. Outside, enjoy a generous rear garden, double garage, and driveway with ample parking for multiple vehicles.



This property is presented by Patrick Graystone - a Love Homes property expert with over 25 years' experience.

Find out more about this property by scanning the QR code.



3.5m



4



2



3

Tenure: Freehold Council Tax: F



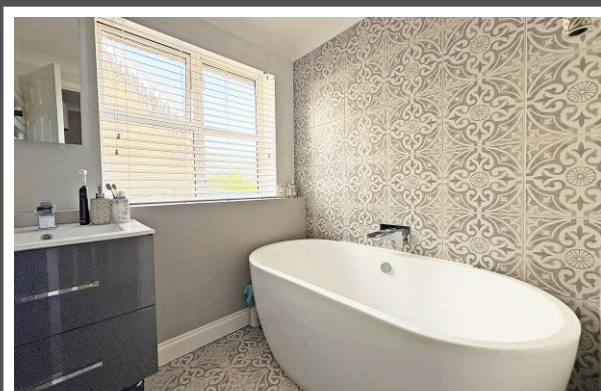
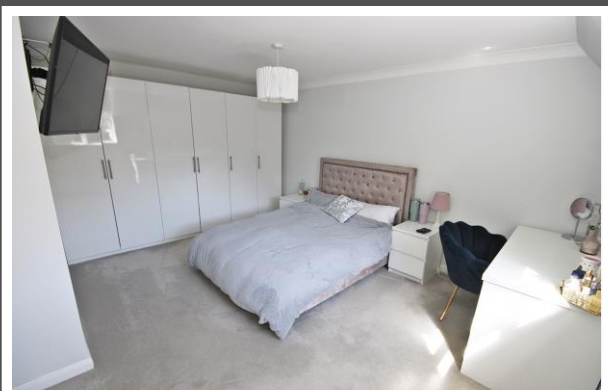
♥

Maulden is a charming village located just outside Ampthill, boasting its own lower school, village hall, two public houses, and a Budgen store. The nearby market town of Ampthill offers a comprehensive range of amenities, including shops, restaurants, parks, and schools catering to all age groups, as well as a Waitrose supermarket.

For even more extensive shopping and leisure options, residents can easily access Milton Keynes and Bedford. The property is conveniently situated for access to junctions 12 and 13 of the M1 motorway.

Flitwick station, nearby, provides mainline railway services with frequent trains to St. Pancras and The City, reaching central London in just 45 minutes via the Thameslink.

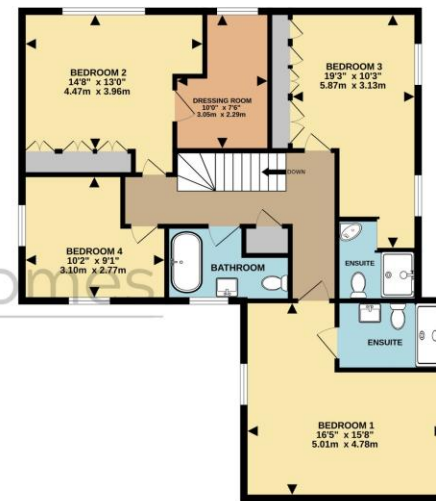
♥



GROUND FLOOR
989 sq.ft. (91.9 sq.m.) approx.



1ST FLOOR
997 sq.ft. (92.6 sq.m.) approx.



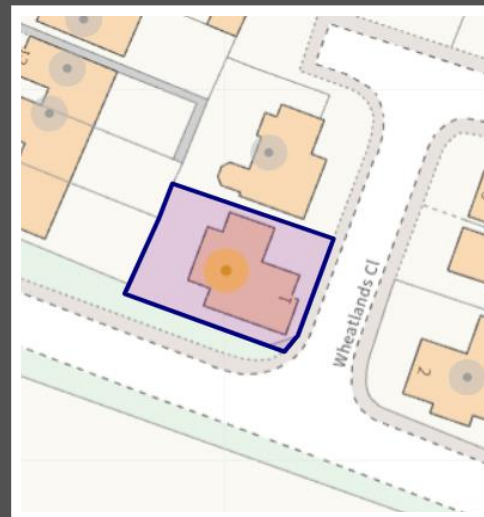
TOTAL FLOOR AREA: 1986 sq.ft. (184.5 sq.m.) approx.
Drawn by Love Homes for illustrative purposes only. Measurements and areas shown are approximate.
Made with Metropix ©2025

Score	Energy rating	Current	Potential
92+	A		
81-91	B		83 B
69-80	C	72 C	
55-68	D		
39-54	E		
21-38	F		
1-20	G		

5 The Russell Centre, Coniston Road, Flitwick, MK45 1QY
Tel: 01525 713111

Email: flitwick@lovehomes.uk

www.lovehomes.uk



These particulars are set out as a general outline in accordance with the Property Misdescriptions Act (1991) only for the guidance of intending purchasers or lessees, and do not constitute any part of an offer or contract. Details are given without any responsibility, and any intending purchasers, lessees or third parties should not rely on them as statements or representations of fact but must satisfy themselves by inspection or otherwise as to the correctness of each of them. We have not carried out a structural survey and the services, appliances and specific fittings have not been tested. All photographs, measurements, floor plans and distances referred to are given as a guide only and should not be relied upon for the purchase of carpets or any other fixtures or fittings. Gardens, roof terraces, balconies and communal gardens as well as tenure and lease details cannot have their accuracy guaranteed for intending purchasers. Lease details, service ground rent (where applicable) are given as a guide only and should be checked and confirmed by your solicitor prior to exchange of contracts. No person in the employment of Love Homes has any authority to make any representation or warranty whatever in relation to this property. Purchase prices, rents or other prices quoted are correct at the date of publication and, unless otherwise stated, are exclusive of VAT. We retain the copyright in all advertising material used to market this Property. All information is as advised by the seller and subject to change. Council tax bands can be subject to change by the local council.

Love Homes