



Dove Walk, Flitwick, Bedfordshire MK45 1NX



This modernized property offers a stylish finish throughout. The ground floor features an entrance lobby, cloakroom, and a bright, open-plan L-shaped reception room with living and dining areas. The contemporary kitchen has garden access and a serving hatch to the dining space. Upstairs includes three well-sized bedrooms, one measuring 8'10" x 7'8", and a sleek family bathroom. Outside, the low-maintenance front garden and landscaped rear garden with artificial grass, a patio, flower borders, and a shed create a practical and inviting space. Gated rear access and a nearby single garage provide added convenience and storage.



This property is presented by Duncan Stead - a Love Homes property expert with over 25 years' experience.

Find out more about this property by scanning the QR code.



0.4m



3



1



1

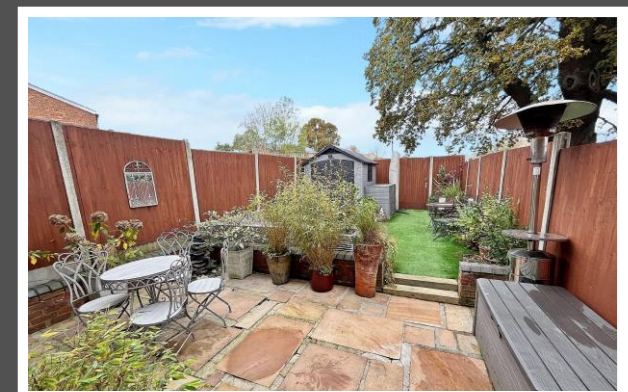
Tenure: Freehold

Council Tax: C

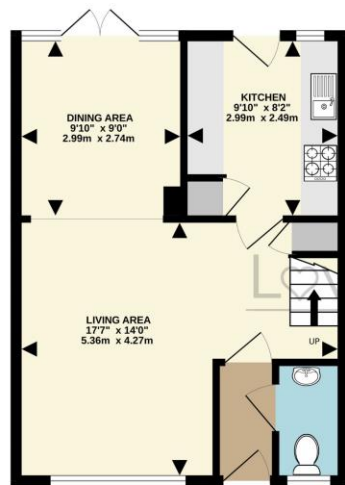




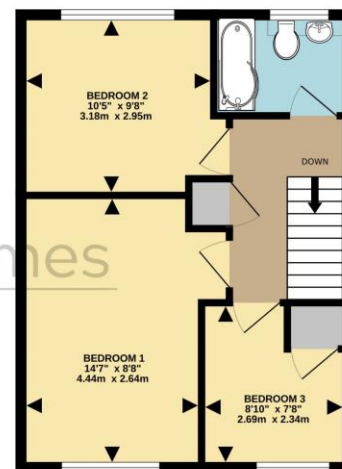
"I guess everyone says "if we could pick up our home..." but we really mean it! We've loved living here because it is so convenient to have everything on our doorstep. Just a stone's throw from well regarded schools and an 8 minute walk to the train station. Over the years we've updated everything from kitchen and bathrooms to soffits, gutters and boilers and we hope the new owners will enjoy living here as much as we have."



GROUND FLOOR  
415 sq.ft. (38.6 sq.m.) approx.



1ST FLOOR  
424 sq.ft. (39.4 sq.m.) approx.



TOTAL FLOOR AREA: 839 sq.ft. (77.9 sq.m.) approx.  
Drawn by Love Homes for illustrative purposes only. Measurements and areas shown are approximate.  
Made with Metropix ©2024

Score	Energy rating	Current	Potential
92+	A		
81-91	B		
69-80	C		
55-68	D		
39-54	E		
21-38	F		
1-20	G		

**EPC RATING TO FOLLOW**



These particulars are set out as a general outline in accordance with the Property Misdescriptions Act (1991) only for the guidance of intending purchasers or lessees, and do not constitute any part of an offer or contract. Details are given without any responsibility, and any intending purchasers, lessees or third parties should not rely on them as statements or representations of fact but must satisfy themselves by inspection or otherwise as to the correctness of each of them. We have not carried out a structural survey and the services, appliances and specific fittings have not been tested. All photographs, measurements, floor plans and distances referred to are given as a guide only and should not be relied upon for the purchase of carpets or any other fixtures or fittings. Gardens, roof terraces, balconies and communal gardens as well as tenure and lease details cannot have their accuracy guaranteed for intending purchasers. Lease details, service ground rent (where applicable) are given as a guide only and should be checked and confirmed by your solicitor prior to exchange of contracts. No person in the employment of Love Homes has any authority to make any representation or warranty whatever in relation to this property. Purchase prices, rents or other prices quoted are correct at the date of publication and, unless otherwise stated, are exclusive of VAT. We retain the copyright in all advertising material used to market this Property. All information is as advised by the seller and subject to change. Council tax bands can be subject to change by the local council.

5 The Russell Centre, Coniston Road, Flitwick, MK45 1QY  
Tel: 01525 713111

Email: [flitwick@lovehomes.uk](mailto:flitwick@lovehomes.uk)

[www.lovehomes.uk](http://www.lovehomes.uk)



**Love Homes**