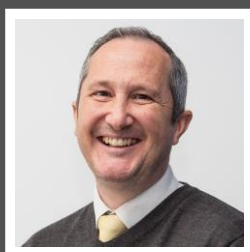




Mill Lane, Greenfield, Bedfordshire MK45 5DF

This property offers an entrance hall with a cloakroom, a living room with French doors leading to an 18'8" conservatory, a family room/home office, and a kitchen adjacent to a dining room, with potential to combine them. Large windows fill the space with natural light. Upstairs, there are four spacious bedrooms and a family bathroom. The double garage with an electric door and large driveway provides ample parking, including space for a motorhome or caravan. The west-facing garden features a spacious brick-paved patio, ideal for outdoor enjoyment.



This property is presented by Duncan Stead - a Love Homes property expert with over 25 years' experience.

Find out more about this property by scanning the QR code.



1.8m



4



3



1

Tenure: Freehold

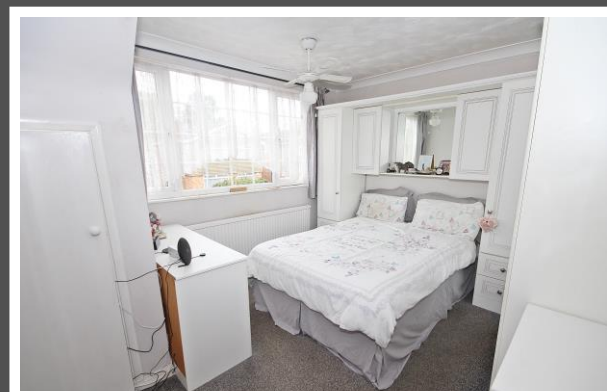
Council Tax: E



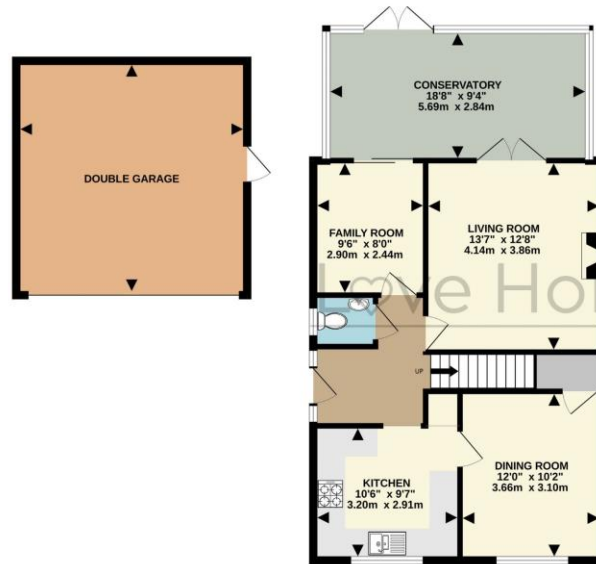
The village of Greenfield is perfect for those looking for village life, surrounded by fields but with the convenience of nearby transport links and modern facilities. Greenfield is just 1.5 miles (approx.) from Flitwick with an excellent mainline rail service into St Pancras in under 45 minutes, and the M1 (Junction 12) is just 4 miles away.

The village boasts a public house and a highly regarded lower school, along with delightful nearby countryside walks.

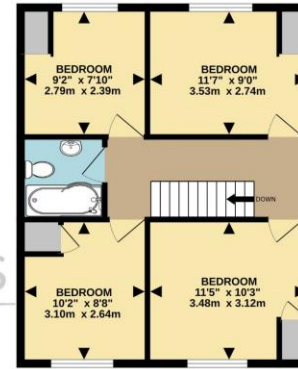
Further nearby facilities include a modern leisure centre in Flitwick and the historic Georgian market town of Ampthill, with a Waitrose supermarket, a variety of restaurants, boutique shops, and parkland. Additionally, the city of Milton Keynes is within a 17-mile reach.



GROUND FLOOR  
1027 sq.ft. (95.4 sq.m.) approx.



1ST FLOOR  
521 sq.ft. (48.4 sq.m.) approx.



TOTAL FLOOR AREA : 1548 sq.ft. (143.8 sq.m.) approx.

Drawn by Love Homes for illustrative purposes only. Measurements and areas shown are approximate.  
Made with Metropix ©2024

Score	Energy rating	Current	Potential
92+	A		
81-91	B		82 B
69-80	C		
55-68	D	60 D	
39-54	E		
21-38	F		
1-20	G		



These particulars are set out as a general outline in accordance with the Property Misdescriptions Act (1991) only for the guidance of intending purchasers or lessees, and do not constitute any part of an offer or contract. Details are given without any responsibility, and any intending purchasers, lessees or third parties should not rely on them as statements or representations of fact but must satisfy themselves by inspection or otherwise as to the correctness of each of them. We have not carried out a structural survey and the services, appliances and specific fittings have not been tested. All photographs, measurements, floor plans and distances referred to are given as a guide only and should not be relied upon for the purchase of carpets or any other fixtures or fittings. Gardens, roof terraces, balconies and communal gardens as well as tenure and lease details cannot have their accuracy guaranteed for intending purchasers. Lease details, service ground rent (where applicable) are given as a guide only and should be checked and confirmed by your solicitor prior to exchange of contracts. No person in the employment of Love Homes has any authority to make any representation or warranty whatever in relation to this property. Purchase prices, rents or other prices quoted are correct at the date of publication and, unless otherwise stated, are exclusive of VAT. We retain the copyright in all advertising material used to market this Property. All information is as advised by the seller and subject to change. Council tax bands can be subject to change by the local council.

5 The Russell Centre, Coniston Road, Flitwick, MK45 1QY  
Tel: 01525 713111

Email: [flitwick@lovehomes.uk](mailto:flitwick@lovehomes.uk)

[www.lovehomes.uk](http://www.lovehomes.uk)



**Love Homes**