

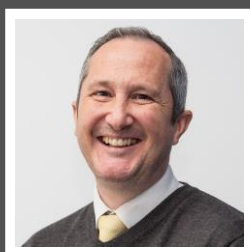
Love Homes



Grasmere Close, Flitwick, Bedfordshire, MK45 1NN

The ground floor features a welcoming lobby leading to a 24ft open-plan lounge/dining area, perfect for entertaining or relaxing. A modern kitchen offers coordinated units and rear garden access. A light-filled study provides an ideal workspace. Upstairs, find two spacious double bedrooms, a single bedroom, all with built-in storage, and a stylish family bathroom refitted in May 2024.

Outside, a brick-paved driveway with an EV charger provides parking for two, plus a garage nearby for extra parking or storage. The lawned rear garden includes a patio, shed, and gated side access for convenience.



This property is presented by Duncan Stead - a Love Homes property expert with over 25 years' experience.

Find out more about this property by scanning the QR code.



0.2m



3



2



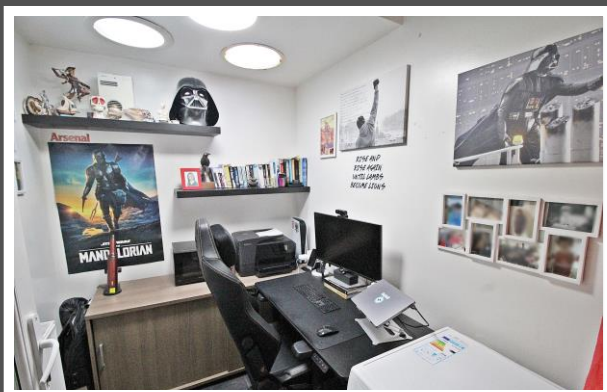
1

Tenure: Freehold

Council Tax: C



"Welcome to our much-loved first home. This is where we started our family and watched our children take their first steps. It's been a warm, welcoming place for both us and our little ones, and filled with some of our favourite memories. One of the things we've loved most about living here is the location. The nurseries/schools nearby have been fantastic and the neighbourhood is incredibly friendly. It's easy to get around too - the train station is just a short walk away, making commuting straightforward, and there are plenty of local amenities right on our doorstep. Whether it's a quick run to the shops or a stroll in the nearby parks, everything feels close and convenient. We hope our home brings as much happiness to the next owners as it has to us."





TOTAL FLOOR AREA: 803 sq.ft. (74.6 sq.m.) approx.
Created by Love Homes for illustrative purposes only. Measurements and areas shown are approximate. Made with Housify 1/2024

Score	Energy rating	Current	Potential
92+	A		
81-91	B		
69-80	C		
55-68	D		
39-54	E		
21-38	F		
1-20	G		

EPC RATING
TO FOLLOW



These particulars are set out as a general outline in accordance with the Property Misdescriptions Act (1991) only for the guidance of intending purchasers or lessees, and do not constitute any part of an offer or contract. Details are given without any responsibility, and any intending purchasers, lessees or third parties should not rely on them as statements or representations of fact but must satisfy themselves by inspection or otherwise as to the correctness of each of them. We have not carried out a structural survey and the services, appliances and specific fittings have not been tested. All photographs, measurements, floor plans and distances referred to are given as a guide only and should not be relied upon for the purchase of carpets or any other fixtures or fittings. Gardens, roof terraces, balconies and communal gardens as well as tenure and lease details cannot have their accuracy guaranteed for intending purchasers. Lease details, service ground rent (where applicable) are given as a guide only and should be checked and confirmed by your solicitor prior to exchange of contracts. No person in the employment of Love Homes has any authority to make any representation or warranty whatever in relation to this property. Purchase prices, rents or other prices quoted are correct at the date of publication and, unless otherwise stated, are exclusive of VAT. We retain the copyright in all advertising material used to market this Property. All information is as advised by the seller and subject to change. Council tax bands can be subject to change by the local council.

5 The Russell Centre, Coniston Road, Flitwick, MK45 1QY
 Tel: 01525 713111

Email: flitwick@lovehomes.uk

www.lovehomes.uk



Love Homes