

# Love Homes



Newton View, Flitwick, Bedfordshire, MK45 1GH

The property offers stylish open plan accommodation that briefly comprises; an entrance hall, a downstairs cloakroom, a fabulous open plan living/dining room that overlooks the garden and a stylish kitchen with integrated fridge/freezer, dishwasher and washing machine. The first floor benefits from a family bathroom, three good size bedrooms (the smallest is 10'4" x 6'5") whilst the main bedroom benefits from a built in wardrobe and stylish en-suite shower room. Outside the south easterly facing rear garden is mostly laid to lawn with a paved patio seating area and gated side access to the front aspect. Further benefits include a carport and off road parking,



This property is presented by Duncan Stead - a Love Homes property expert with over 25 years' experience.

Find out more about this property by scanning the QR code.



1.0m



3



1



2

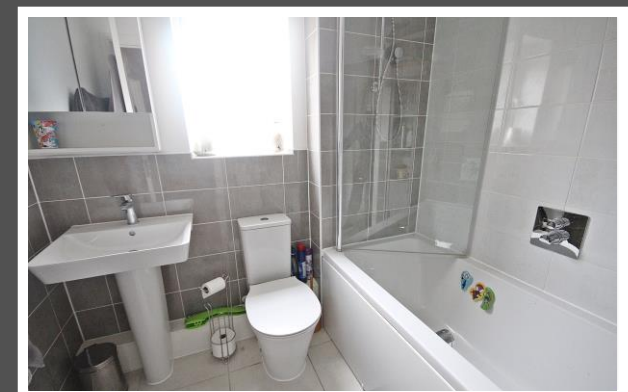
Tenure: Freehold

Council Tax: C

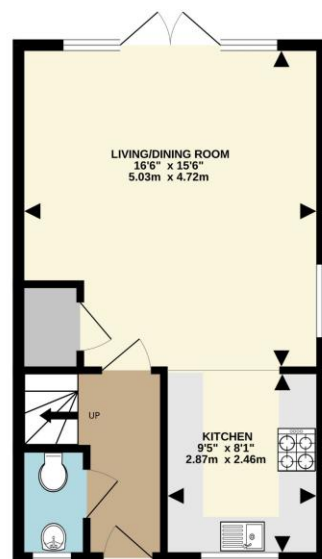




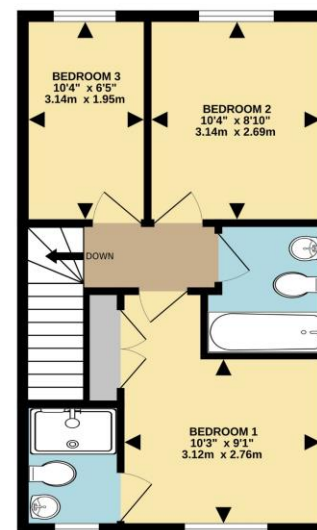
"From the very beginning, our home has been a joy for our growing young family, serving as a haven for creating countless treasured memories. As first time buyers, we were keen to buy a new home and start a family in a serene and secure development. Flitwick town centre and the train station are just a leisurely stroll away, making commuting a breeze and our kids love having the local playground so close by, not to mention fabulous countryside walks. To top it off, the useful carport adds practicality and shelter for our vehicles. This home has been our first step into home ownership and we hope its next owners will experience the same warmth and happiness we have".



GROUND FLOOR  
405 sq.ft. (37.7 sq.m.) approx.



1ST FLOOR  
405 sq.ft. (37.7 sq.m.) approx.



TOTAL FLOOR AREA: 811 sq.ft. (75.3 sq.m.) approx.  
Drawn by Love Homes for illustrative purposes only. Measurements and areas shown are approximate.  
Made with Metropix ©2023

Score	Energy rating	Current	Potential
92+	<b>A</b>		96 <b>A</b>
81-91	<b>B</b>	84 <b>B</b>	
69-80	<b>C</b>		
55-68	<b>D</b>		
39-54	<b>E</b>		
21-38	<b>F</b>		
1-20	<b>G</b>		

5 The Russell Centre, Coniston Road, Flitwick, MK45 1QY  
Tel: 01525 713111

Email: [flitwick@lovehomes.uk](mailto:flitwick@lovehomes.uk)

[www.lovehomes.uk](http://www.lovehomes.uk)



These particulars are set out as a general outline in accordance with the Property Misdescriptions Act (1991) only for the guidance of intending purchasers or lessees, and do not constitute any part of an offer or contract. Details are given without any responsibility, and any intending purchasers, lessees or third parties should not rely on them as statements or representations of fact but must satisfy themselves by inspection or otherwise as to the correctness of each of them. We have not carried out a structural survey and the services, appliances and specific fittings have not been tested. All photographs, measurements, floor plans and distances referred to are given as a guide only and should not be relied upon for the purchase of carpets or any other fixtures or fittings. Gardens, roof terraces, balconies and communal gardens as well as tenure and lease details cannot have their accuracy guaranteed for intending purchasers. Lease details, service ground rent (where applicable) are given as a guide only and should be checked and confirmed by your solicitor prior to exchange of contracts. No person in the employment of Love Homes has any authority to make any representation or warranty whatever in relation to this property. Purchase prices, rents or other prices quoted are correct at the date of publication and, unless otherwise stated, are exclusive of VAT. We retain the copyright in all advertising material used to market this Property. All information is as advised by the seller and subject to change. Council tax bands can be subject to change by the local council.

**Love Homes**