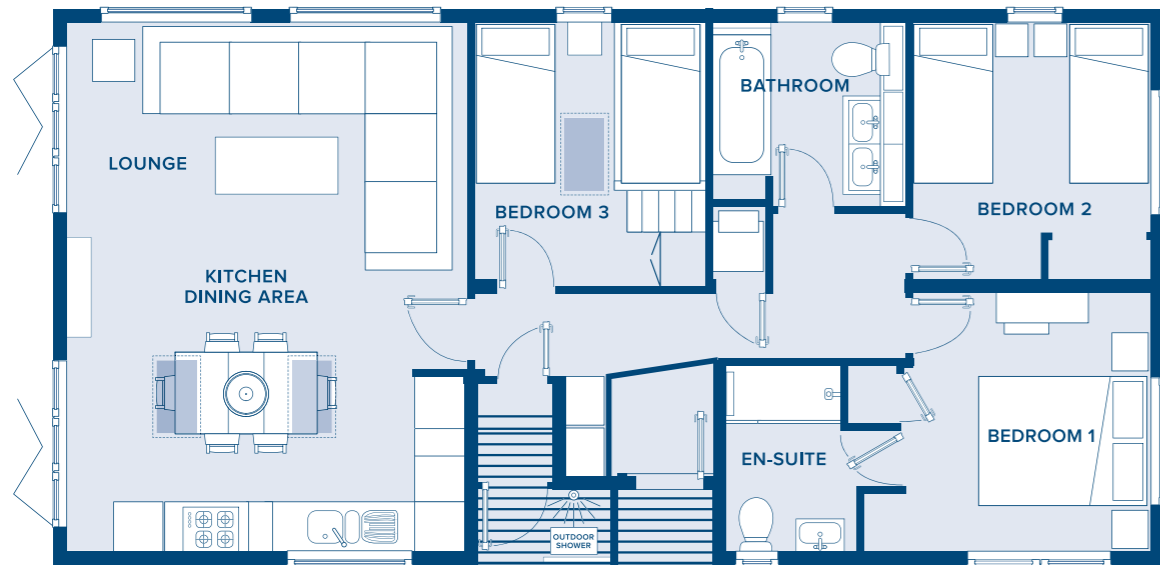


THE SEASPRAY

44' X 22' | 3 BEDROOM



THE SEASPRAY

44' X 22' | 3 BEDROOM | GORRAN HAVEN,
BOSWINGER, SOUTH CORNWALL

KEY FEATURES OF THIS HOLIDAY HOME:

- Bespoke design
- Sleeps 7
- Fully fitted kitchen with integrated Bosch appliances inc. 4 gas hob, oven, fridge/freezer, dishwasher and dual washer/dryer
- Open plan living area
- Spacious master bedroom with en-suite
- Outdoor shower, surfboard rack and wetsuit store
- Modern, neutral colour scheme throughout
- Energy efficient 'A-Rated' boiler
- Built to BS3632 specification
- Mood Lighting

IMPORTANT NOTICE:

1: These particulars do not form part of any offer or contract and must not be relied upon as statements or representations of fact. 2: Any areas, measurements or distances are approximate. The text, photographs and plans are for guidance only and are not necessarily comprehensive. All accommodation at Seaview is sold for HOLIDAY USE ONLY and must not be used as a primary place of residence. Evidence of a permanent home address is required before purchasing and on-going annual checks of your permanent home address are a compulsory requirement of ownership.



For all enquiries, call **01726 843 425**
or email: jeremy.reuben@swholidayparks.co.uk

YOUR HOLIDAY HOME INCLUDES:

- Delivery, siting and all utilities connected
- Fully furnished throughout
- All kitchen appliances
- Digital TV aerial
- Manufacturer's Warranty

PARK FEATURES & BENEFITS:

- 5* Visit England graded park
- Full 12-month holiday season
- Outdoor heated swimming pool
- Badminton/Tennis court
- Children's play areas
- Stunning sea views

BENEFITS OF OWNERSHIP:

- Simple "turnkey" holiday home ownership
- NO stamp duty to pay
- NO legal fees to pay
- A range of financing options including; equity release, property part-exchange and Black Horse finance
- Fully-managed letting service available
- Holiday at any time of the year with no closed season

VIEWING BY APPOINTMENT WITH SEAVIEW

WHY CHOOSE SEAVIEW GORRAN HAVEN?

Seaview Gorran Haven is surrounded by a patchwork of fields, interrupted by groves of trees and the deep blue of the ocean. Enjoy a morning jog down to the sandy beaches of Hemmick or spend the day exploring another part of Cornwall just a short car drive away.

Seaview's secluded location doesn't mean that you're cut off from things to see and do.



For those who want to explore what Cornwall has to offer, you'll find yourself within easy reach of attractions and historic sites, such as the Lost Gardens of Heligan, Caerhays Castle and the world-famous Eden Project.



We also have an abundant range of facilities on the park, so you can enjoy your holiday home and its location, whatever the weather.



WELCOME TO THE SEASPRAY

A brand-new holiday lodge from Devon based company Timber Venture, we welcome the **Seaspray**.

Arriving on our Bayview development, the bespoke **Seaspray** lodge has been specifically designed for Seaview Gorran Haven. Superior in quality, this holiday lodge oozes contemporary design.

The modern kitchen is fully equipped with all the appliances that you may need throughout your stay and the spacious living area is dressed in cosy neutral colours with oak finishing for a sophisticated touch.

The neutral colour scheme follows through to the three spacious bedrooms. Fully furnished with cabin and single beds and a king-size bed in the master, the **Seaspray** lodge comfortably accommodates 7 people, perfect for all the family. The master bedroom also benefits from a generously sized, modern en-suite bathroom and a walk-in wardrobe.

Perfect for a family of adventurers, this holiday home is even equipped with a wetsuit rack, bike storage and an outdoor shower for those sandy beach trips. Cleverly designed for its location, the **Seaspray** lodge is an ideal unique getaway.



THE LODGE LOCATION

Our stunning **Seaspray** lodge is situated on our **brand-new Bayview development**. With a large decking area, this luxury holiday home is perfect for taking in the beautiful unspoilt views of the south Cornwall coast.

This holiday home also benefits from a double-parking space and a 12-month holiday season, meaning it can be enjoyed at any time of the year.

