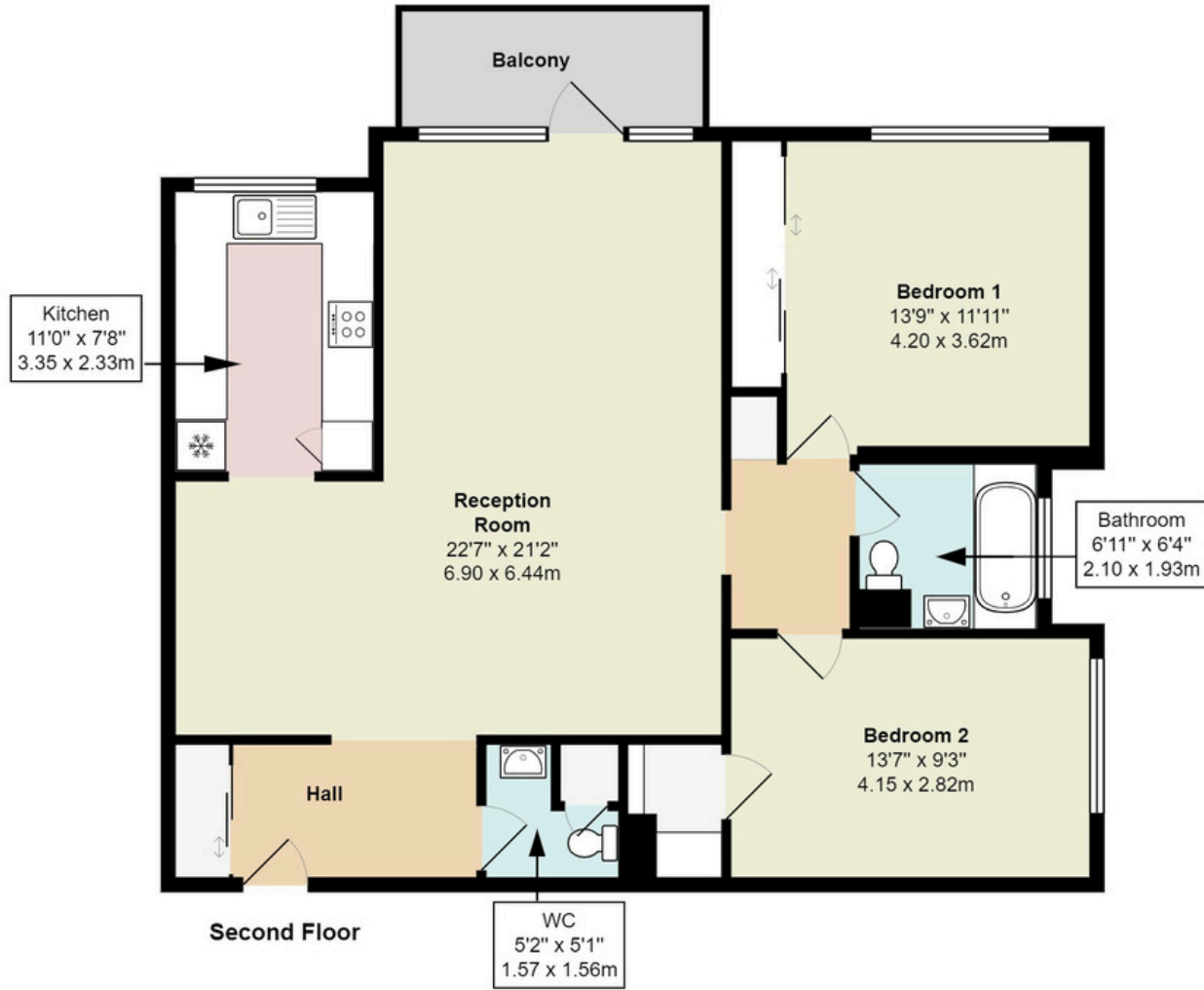




James Close NW11

Total Area: 960 ft² ... 89.2 m²



James Close, Woodlands, Golders Green, NW11 Offers Over: £550,000

Spacious, Purpose Built, Two Bedroom Flat boasting 960sqft situated within the popular development in Woodlands, NW11.

This property comprises two double bedrooms, family bathroom, large reception room, modern fully fitted kitchen, private balcony, guest W/C and plenty of storage space throughout. Further benefits include off street parking and a building porter.

Share of Freehold with a Lease length of 942 years.
Service Charge and Reserve Fund: Approx. £5,000.00 per annum.
EPC Rating: D
Council Tax Band: F (Barnet)



903-905 Finchley Road Golders Green London NW11 7PE

Telephone 020 8381 4970 Email info@moreland.uk.com

Registered Office Unit 8, Alpha Business Park, Travellers Close, Welham Green AL9 7NT Registered in England No. 3663497 Vat No. 701775936


Residential Sales Lettings Full Management Financial Services New Homes





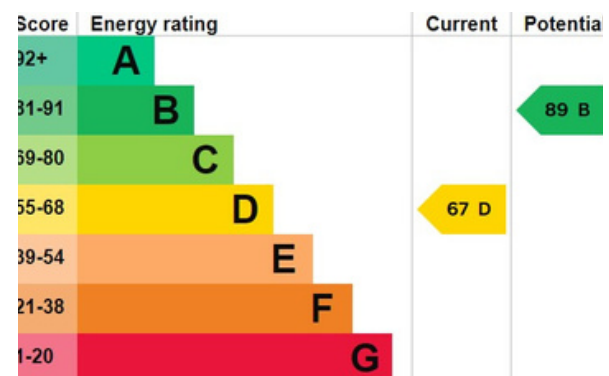
Tenure Freehold

 753 ft2 / 89.2 m2

 3 Bedroom

 2 Bathroom

 Permit



903-905 Finchley Road Golders Green London NW11 7PE
 Telephone 020 8381 4970 Email info@moreland.uk.com
 Registered Office Unit 8, Alpha Business Park, Travellers Close, Welham Green AL9 7NT Registered in England No. 3663497 Vat No. 701775936
 Residential Sales Lettings Full Management Financial Services New Homes

