



Rotherwick Road, Hampstead Garden Suburb, NW11
Asking Price: £1,900,000

moreland 



moreland



A substantial five-bedroom, three-bathroom semi-detached family home, originally built in 1910 by the renowned Parker & Unwin Architects. Arranged over four floors, the property extends to approximately 2,575 sq ft (239.2 sq m), offering generous and versatile living space throughout.

The ground floor features two well-proportioned reception rooms, ideal for both entertaining and everyday family living. These spaces are enhanced by excellent natural light, creating bright and inviting interiors. The lower level comprises a welcoming hallway, a spacious kitchen/breakfast room with direct access to the garden, a front reception room, utility room, and a guest cloakroom.

The property offers five generously sized bedrooms, providing comfortable and private accommodation for family members and guests alike. The flexible layout also lends itself well to home working. Three modern bathrooms serve the home, ensuring both convenience and practicality.

Externally, the property boasts a mature 103 ft south-east facing rear garden, along with a front garden and off-street parking.



This impressive residence presents a rare opportunity to acquire a substantial family home in a highly sought-after Hampstead Garden Suburb location. Its generous proportions and adaptable layout are perfectly complemented by convenient access to local amenities, well-regarded schools, and excellent transport links.

Size - 2575 sqft / 239.2 sqm



5 Bedrooms

Tenure - Freehold



3 Bathroom

Council - Barnet



3 Reception

Tax Band - G



Drive

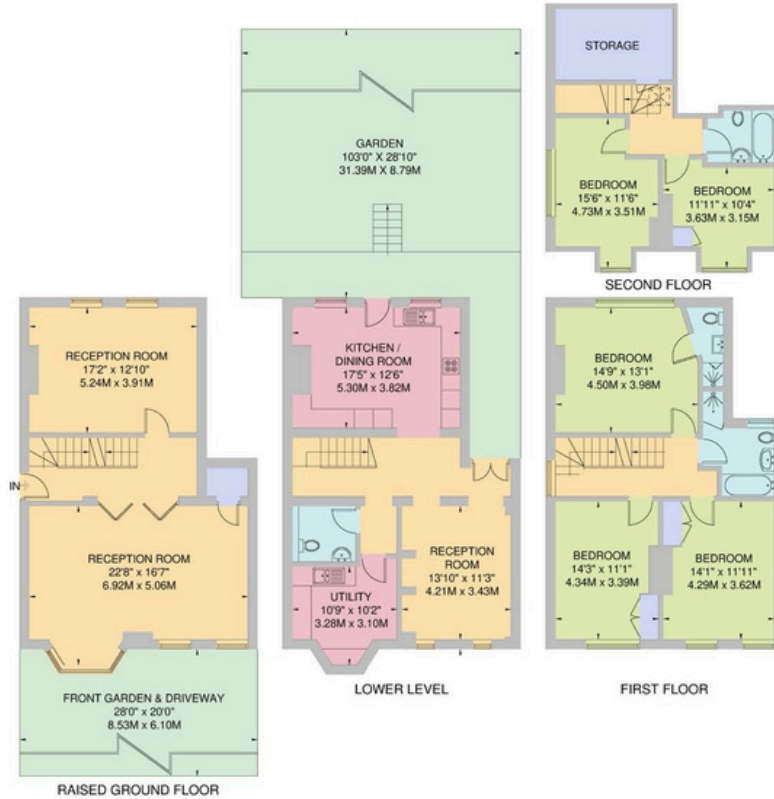
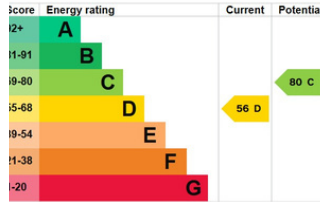




Rotherwick Road HGS, NW11

Approximate Gross Internal Area

239.2 sq m / 2575 sq ft





At Moreland, our mission is to deliver a trusted, professional, and personalised property service by combining deep local expertise with clear communication and a genuine commitment to our clients' best interests.

We strive to make every property journey smooth, transparent, and successful, building long-term relationships through integrity, knowledge, and exceptional customer care.

020 8381 4970

info@morelandestateagents.co.uk

Moreland Estates Ltd is a company registered in England and Wales with company number 03663497

Trading Address is: 903 - 905 Finchley Road, Golders Green, London, NW11 7PE

VAT Registration Number: GB 701 775 936

Registered Office is: Unit 8 Alpha Business Park, Travellers Close, Welham Green, Hertfordshire, AL9 7NT

